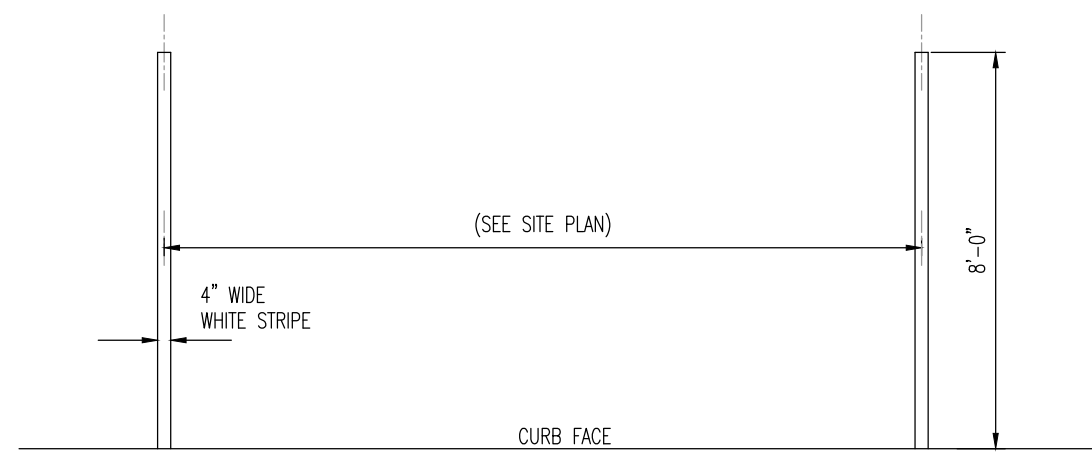


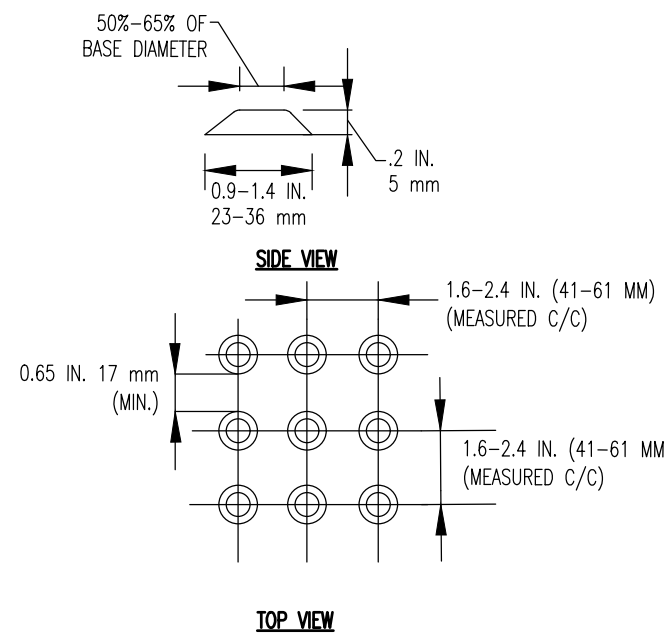
UTILITY SERVICE TRENCH DETAIL

NOT TO SCALE



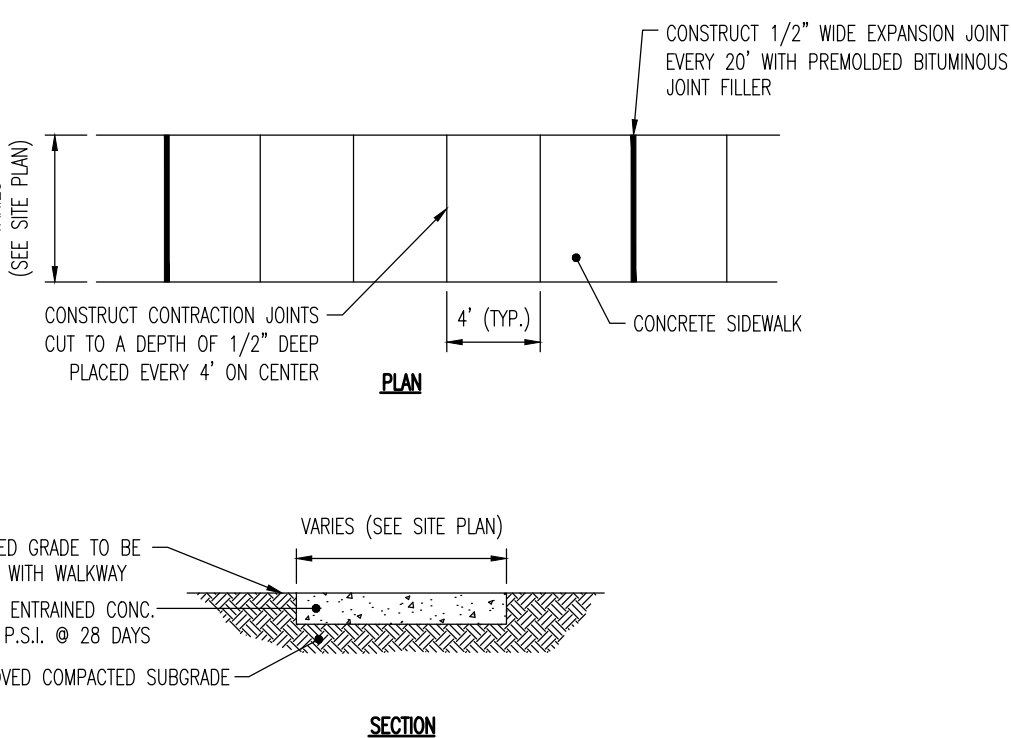
PARALLEL PARKING STALL STRIPING DETAIL

NOT TO SCALE



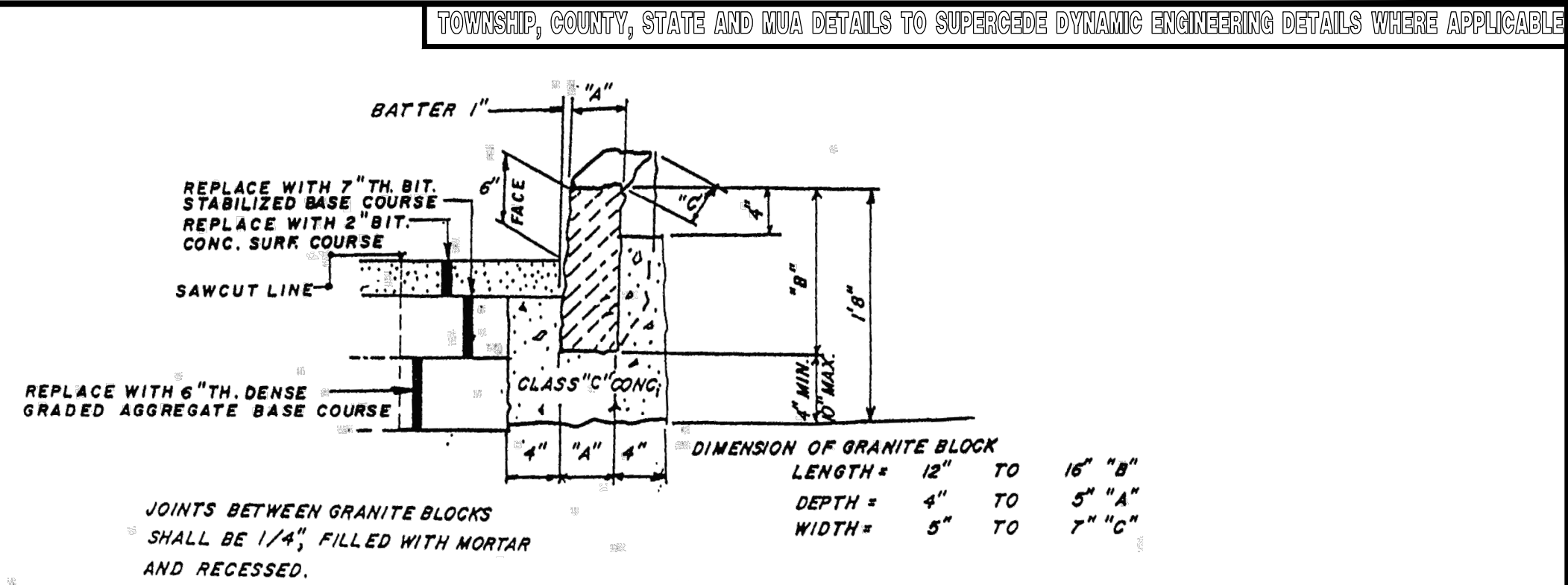
TRUNCATED DOME PATTERN FOR A.D.A. DETECTABLE WARNING SURFACE

NOT TO SCALE



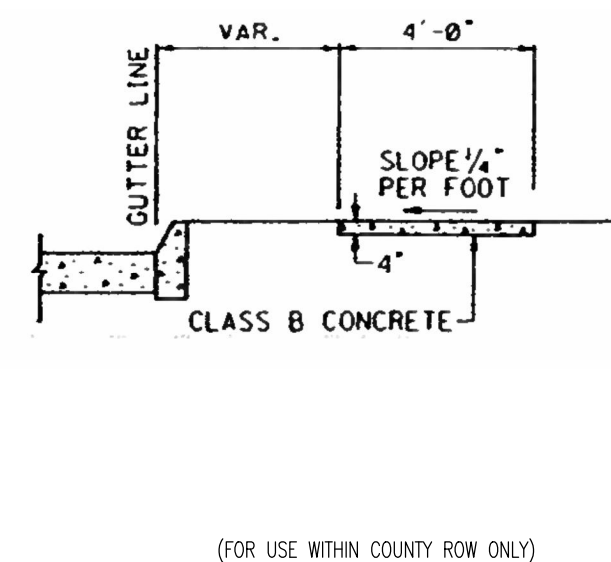
SIDEWALK DETAIL

NOT TO SCALE



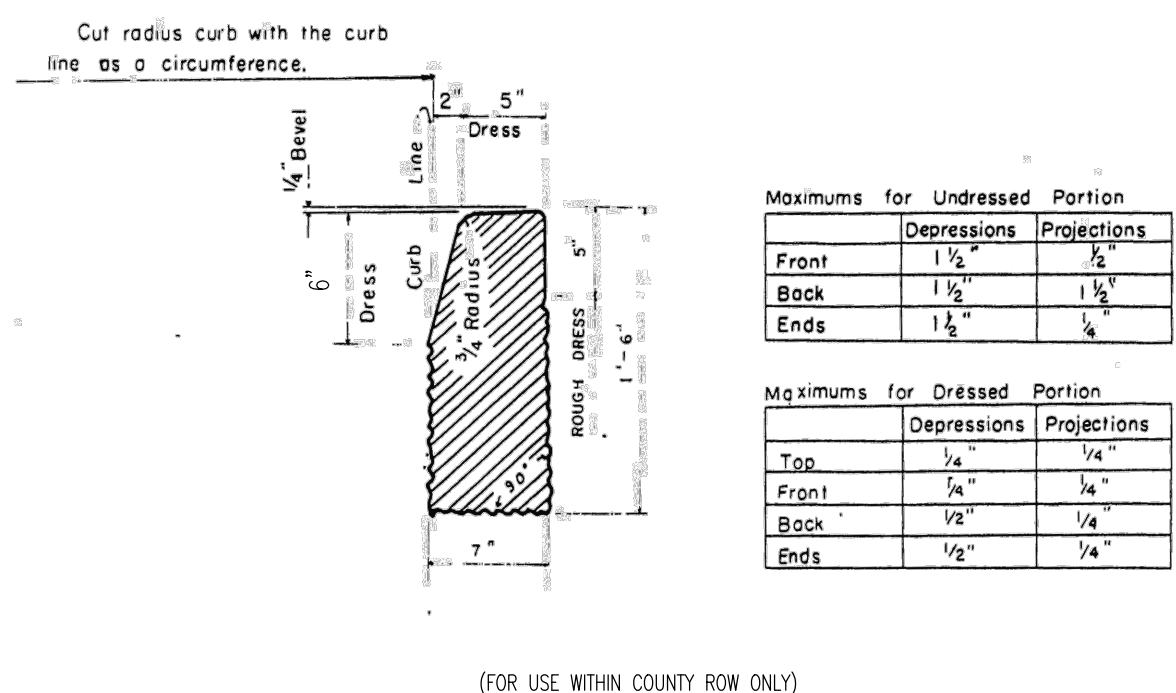
ESSEX COUNTY GRANITE BLOCK CURB & PAVEMENT REPAIR DETAIL

NOT TO SCALE



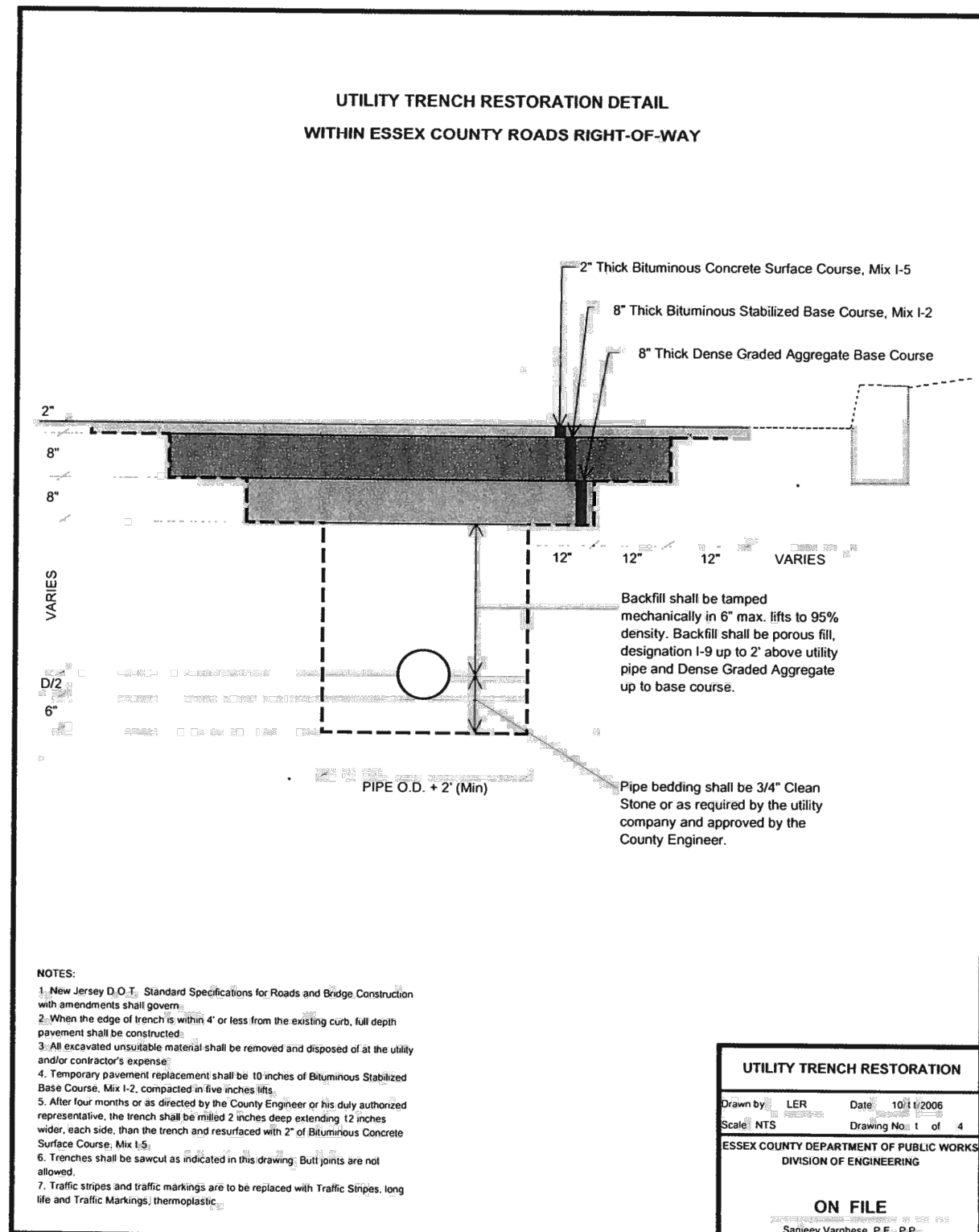
ESSEX COUNTY 4" CONCRETE SIDEWALK DETAIL

NOT TO SCALE



ESSEX COUNTY GRANITE CURB DETAIL

NOT TO SCALE



ESSEX COUNTY UTILITY TRENCH RESTORATION DETAIL

N.T.S.

THIS PLAN SET IS FOR PERMITTING PURPOSES ONLY AND MAY NOT BE USED FOR CONSTRUCTION

DYNAMIC ENGINEERING

LAND DEVELOPMENT CONSULTING • PERMITTING • GEOTECHNICAL • ENVIRONMENTAL • SURVEY • PLANNING & ZONING

1904 Main Street, Suite 110, Chester, NJ 07930
790 Newtown Yardley Road, Suite 425, Newtown, PA 18940
1301 Central Expressway South, Suite 310, Allen, TX 75013

245 Main Street, Suite 110, Chester, NJ 07930
T: 908.879.9229
F: 908.879.0222
www.dynamiceng.com

PROJECT: **CAPODAGLI PROPERTY COMPANY, LLC / MERIDIA, LLC**
MERIDIA VILLAGE COMMONS - PROPOSED MIXED-USE BUILDING

BLOCK: 2.303, LOTS 7-11
4TH STREET & VALLEY STREET (C.R. 638)
TOWNSHIP OF SOUTH ORANGE VILLAGE, ESSEX COUNTY, NJ

TITLE: **CONSTRUCTION DETAILS**

JOSEPH C. SPARONE
BRETT W. SKAPINETZ

PROFESSIONAL ENGINEER
NEW JERSEY LICENSE No. 47204
PENNSYLVANIA LICENSE No. 28935
COLORADO LICENSE No. 36846
VIRGINIA LICENSE No. 61627

PROFESSIONAL ENGINEER
NEW JERSEY LICENSE No. 41895
PENNSYLVANIA LICENSE No. 77727
NEW YORK LICENSE No. 087962
CONNECTICUT LICENSE No. 0027591

JOB No: 1084-16-015
DRAWN BY: JED
DESIGNED BY: RJC
CHECKED BY: JCS

DATE: 06/19/2017
SCALE: (H) AS SHOWN
SHEET No: 9 OF 11

CONSTRUCTION CHECK DATE
CONSTRUCTION CHECK DATE

DEC Client Code: 1084
Rev. # 0