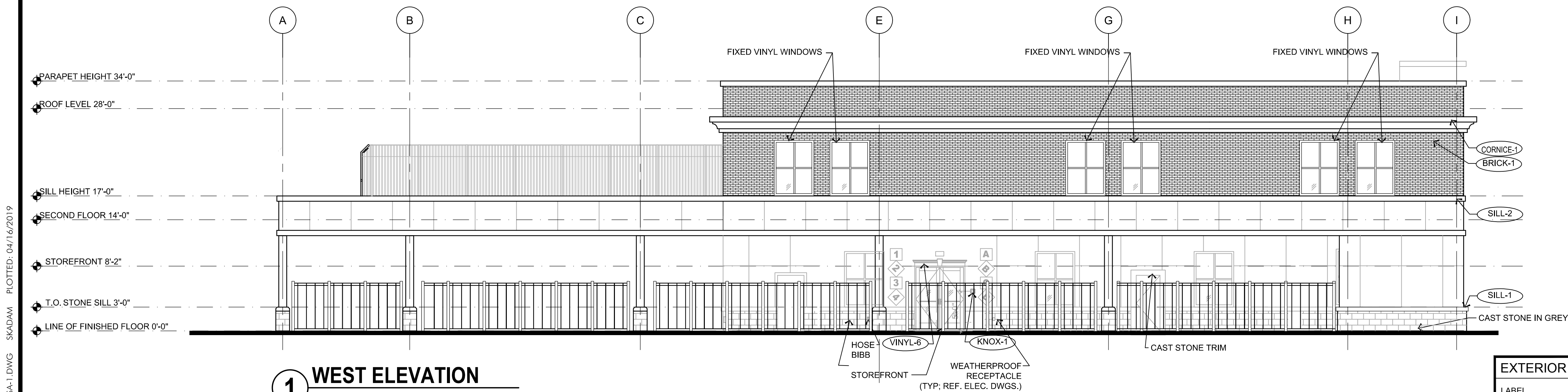


1 SOUTH ELEVATION
SCALE: 1/8"=1'-0"



1 WEST ELEVATION

SCALE: 1/8"=1'-0"

EXTERIOR MATERIAL SCHEDULE			
LABEL	MANUFACTURER	SIZE/TYPE	FINISH COLOR
STOREFRONT DOOR	KAWNEER	TRIFAB 451	BLACK
FIXED WINDOW	ANDERSEN SILVERLINE 2950	PER DOOR SCHEDULE	FACTORY PRIMED
BRICK-1	LAWRENCEVILLE BRICK	PER WINDOW SCHEDULE	BLACK
SILL-1	LAWRENCEVILLE BRICK	MODULAR	COLOR: RED WIRECUT
SILL-2	STONE SILL	TBD	COLOR:YORK GREY
SILL-2	STONE SILL	TBD	COLOR:YORK GREY
VINYL-5	FYPON	DOOR TRIM WIDTH: 48", HEIGHT: 9"	COLOR: BLACK PRODUCT: CSAP48 (REF. NOTE 2 BELOW)
VINYL-6	FYPON	DOOR CROSSHEAD WIDTH: 76", HEIGHT: 9" INTEGRAL KEYSTONE	COLOR: BLACK PRODUCT: WCH76X9K (REF. NOTE 2 BELOW)
KNOX-1	KNOX BOX (MAIN ENTRY)	3200 SERIES W/ RECESSED MOUNT FLANGE, HINGE DOOR, & TAMPER SWITCH	COLOR: DARK BRONZE (REF. NOTE 2 BELOW)
KNOX-2	KNOX BOX (MECHANICAL ROOM)	1650 SERIES W/ RECESSED MOUNT FLANGE, HINGE DOOR, & TAMPER SWITCH	COLOR: DARK BRONZE (REF. NOTE 2 BELOW)
CORNICE-1	TBD	TBD	

FINISH SCHEDULE NOTES:

1. G.C. SHALL VERIFY KNOX BOX MODEL(S) AND LOCATION(S) WITH AUTHORITY HAVING JURISDICTION PRIOR TO ORDERING/INSTALLATION.
2. G.C. SHALL ENSURE ALL EXTERIOR FINISHES ARE INSTALLED AND FINISHED IN COMPLIANCE WITH MANUFACTURERS' WARRANTY REQUIREMENTS.

1. CONTRACTOR SHALL SUPERVISE AND DIRECT THE WORK USING THE CONTRACTOR'S BEST SKILL AND ATTENTION. THE CONTRACTOR SHALL BE SOLELY RESPONSIBLE AND HAVE CONTROL OVER CONSTRUCTION MEANS, METHODS, TECHNIQUES, SEQUENCE, AND JOB SITE SAFETY.
2. GC MUST PROVIDE & INSTALL ALL PRODUCTS PER PLANS. ONLY SUBSTITUTED PRODUCTS NEED TO BE SUBMITTED TO THE ARCHITECT FOR APPROVAL. UNAPPROVED SUBSTITUTIONS WILL BE REPLACED AT THE EXPENSE OF THE GC.
3. VERBAL REPRESENTATION HAS NO VALUE AND ALL REQUESTS TO CHANGE ANY PRODUCTS OR SPECIFICATIONS PER PLANS, MUST BE SUBMITTED IN WRITING TO THE ARCHITECT & THE FOR APPROVAL.



Jarmel Kizel

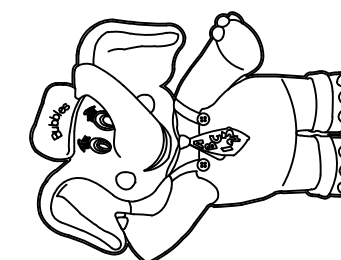
ARCHITECTS AND ENGINEERS
INC. 42 OKNER PARKWAY
LIVINGSTON, NEW JERSEY
07039 TEL: 973-994-9669 FAX:
973-994-4069 www.jarmelkizel.com

Architecture
Engineering
Interior Design
Implementation Services

**THE LEARNING
EXPERIENCE**

**ACADEMY OF
EARLY EDUCATION**

109 W. SOUTH ORANGE AVE.
SOUTH ORANGE, NEW JERSEY

[illegible]

PROFESSIONAL CERTIFICATION

LICENSE NUMBER: 21AI01278700
EXPIRATION DATE: 31 JULY 2019

MATTHEW B. JARMEL, AIA, MBA

Project Number: TLENJ17-264	Scale: AS NOTED
Drawn By: SK	Approved By: MBJ

PROPOSED ELEVATIONS

Drawing Number:

SA-1.3

INITIAL DATE: 1/24/201