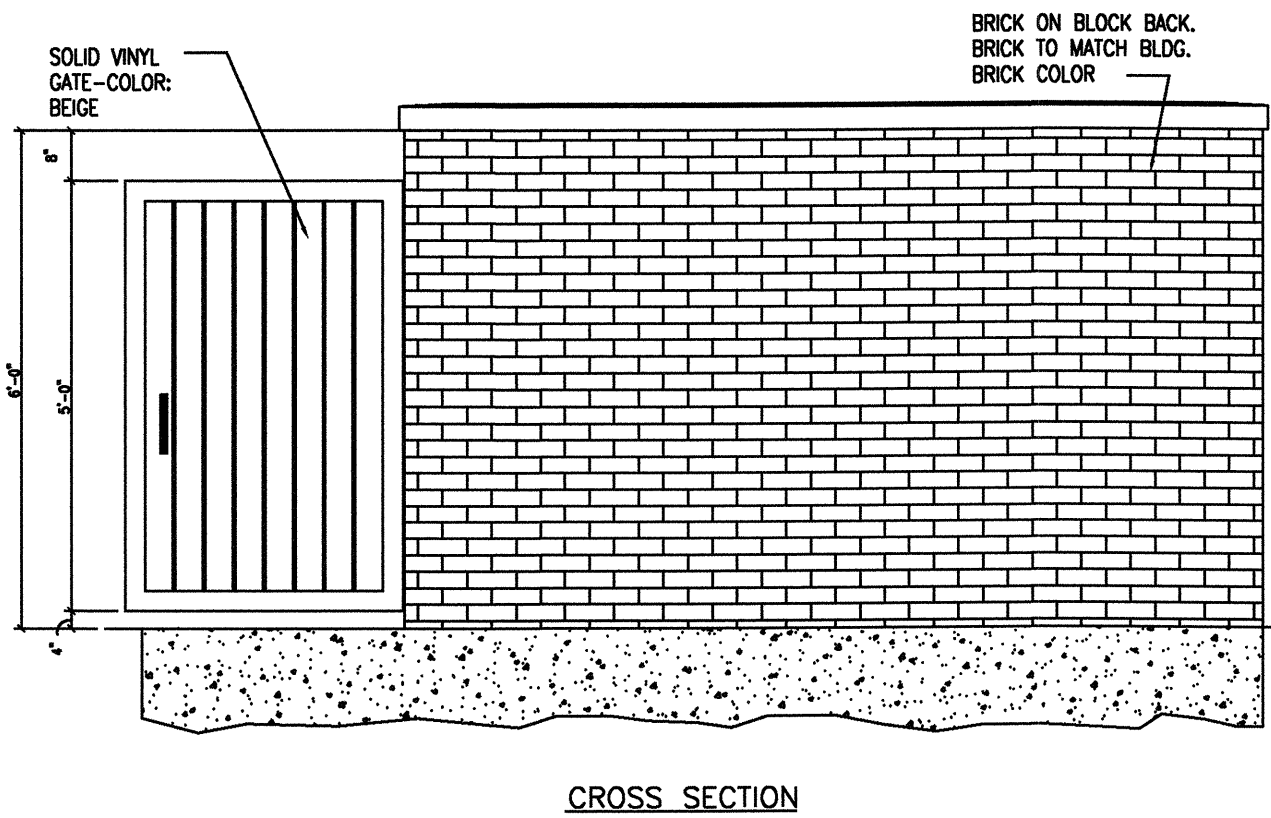
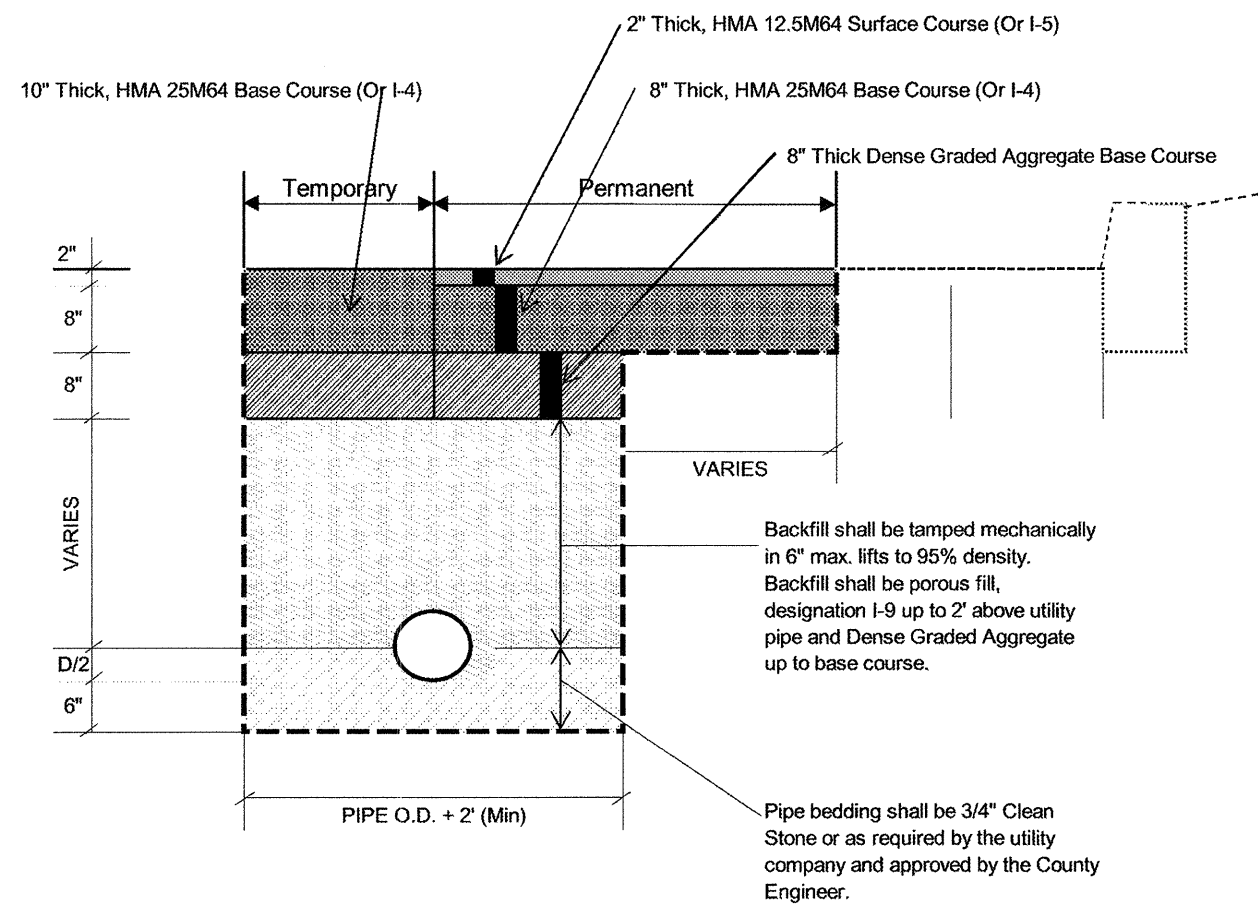


CONCRETE SLAB FOR DUMPSTER
N.T.S.

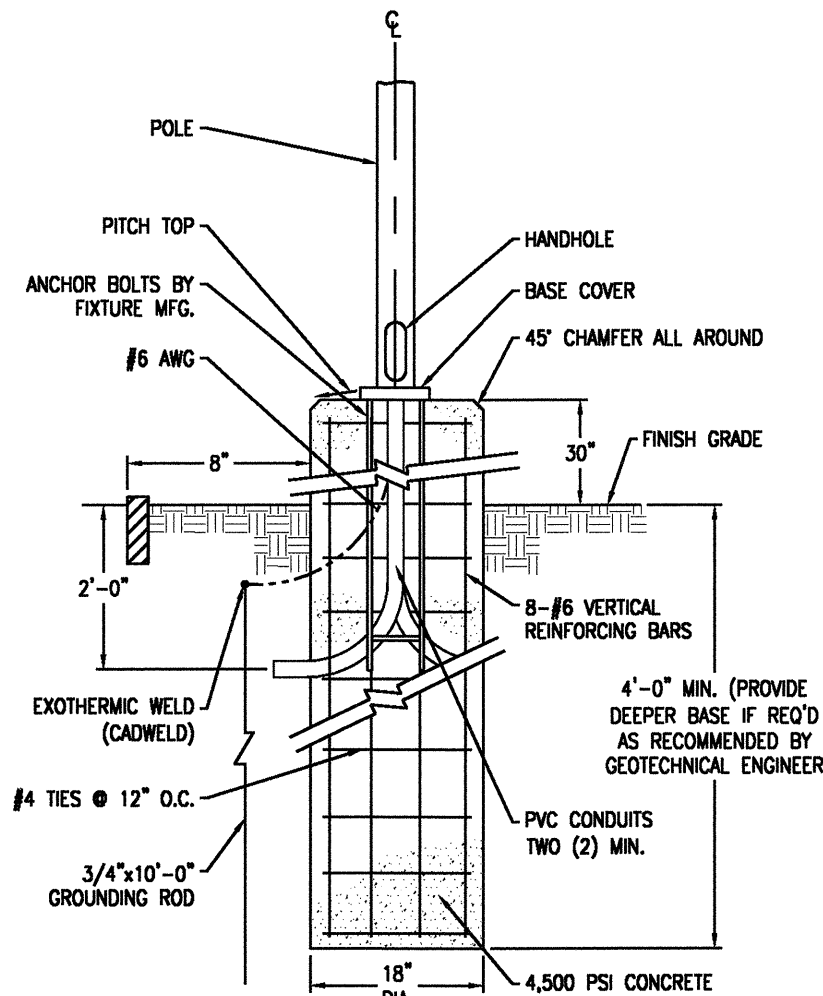


TRASH ENCLOSURE WALL DETAIL
N.T.S.



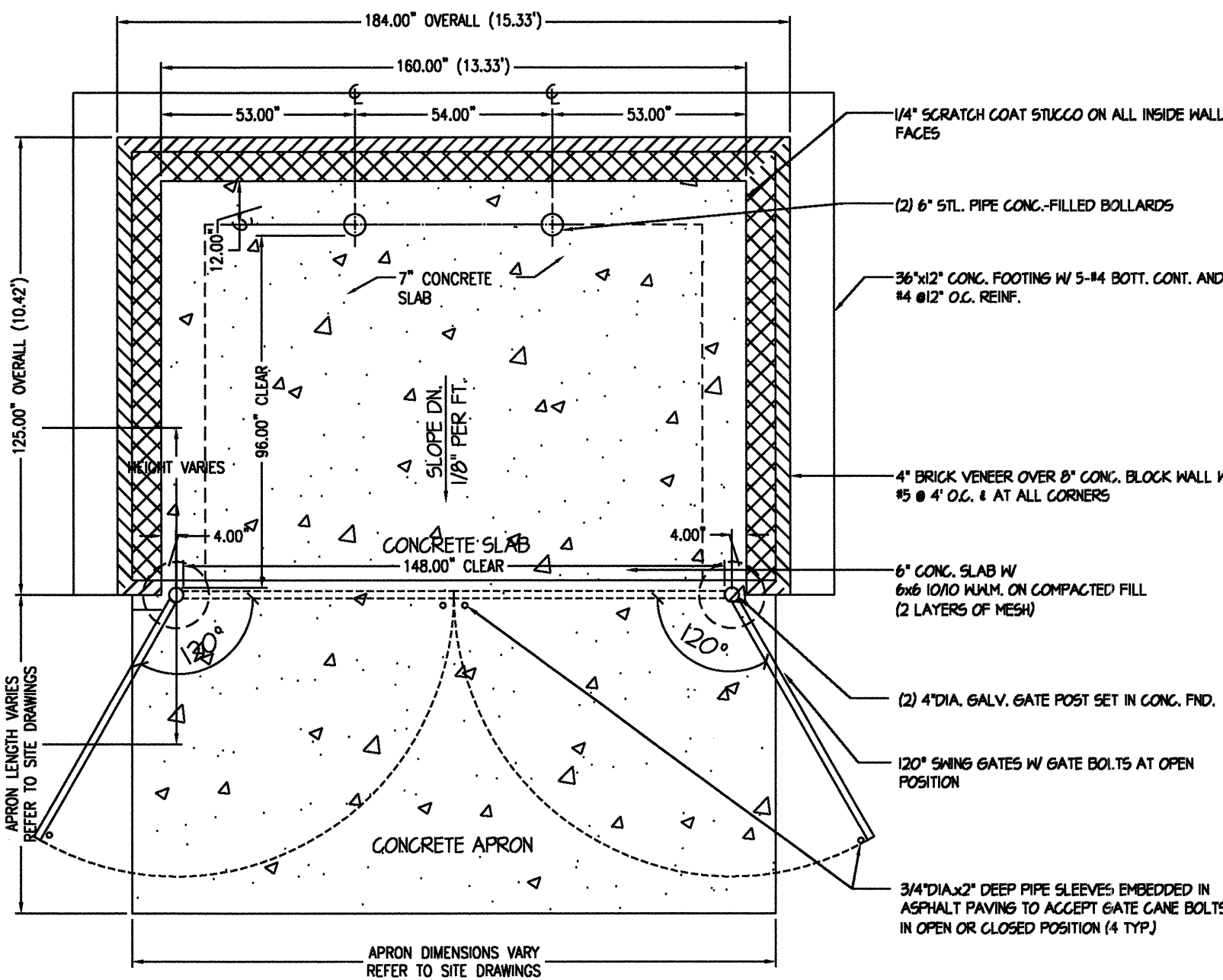
- NOTES:
- 2007 New Jersey D.O.T. Standard Specifications for Roads and Bridge Construction with amendments shall govern.
 - When the edge of trench is within 4' or less from the existing curb, full depth pavement shall be constructed.
 - All excavated unsuitable material shall be removed and disposed of at the utility and/or contractor's expense.
 - Temporary pavement replacement shall be 10 inches of HMA 25M64 Surface Course or 1-4, compacted in five inch lifts.
 - After three (3) months or as directed by the County Engineer or his duly authorized representative, the trench shall be milled 2 inches deep, as per limits determined on Details A thru F, then the trench must be resurfaced with 2" of HMA 12.5M64 Surface Course. (See Details A thru F)
 - Trenches shall be sawcut as indicated in this drawing. Butt joints are not allowed.
 - Traffic stripes and traffic markings are to be replaced with Traffic Stripes, long life and Traffic Markings, thermoplastic.

TRENCH/BACKFILL SECTION (COUNTY ROAD)
N.T.S.

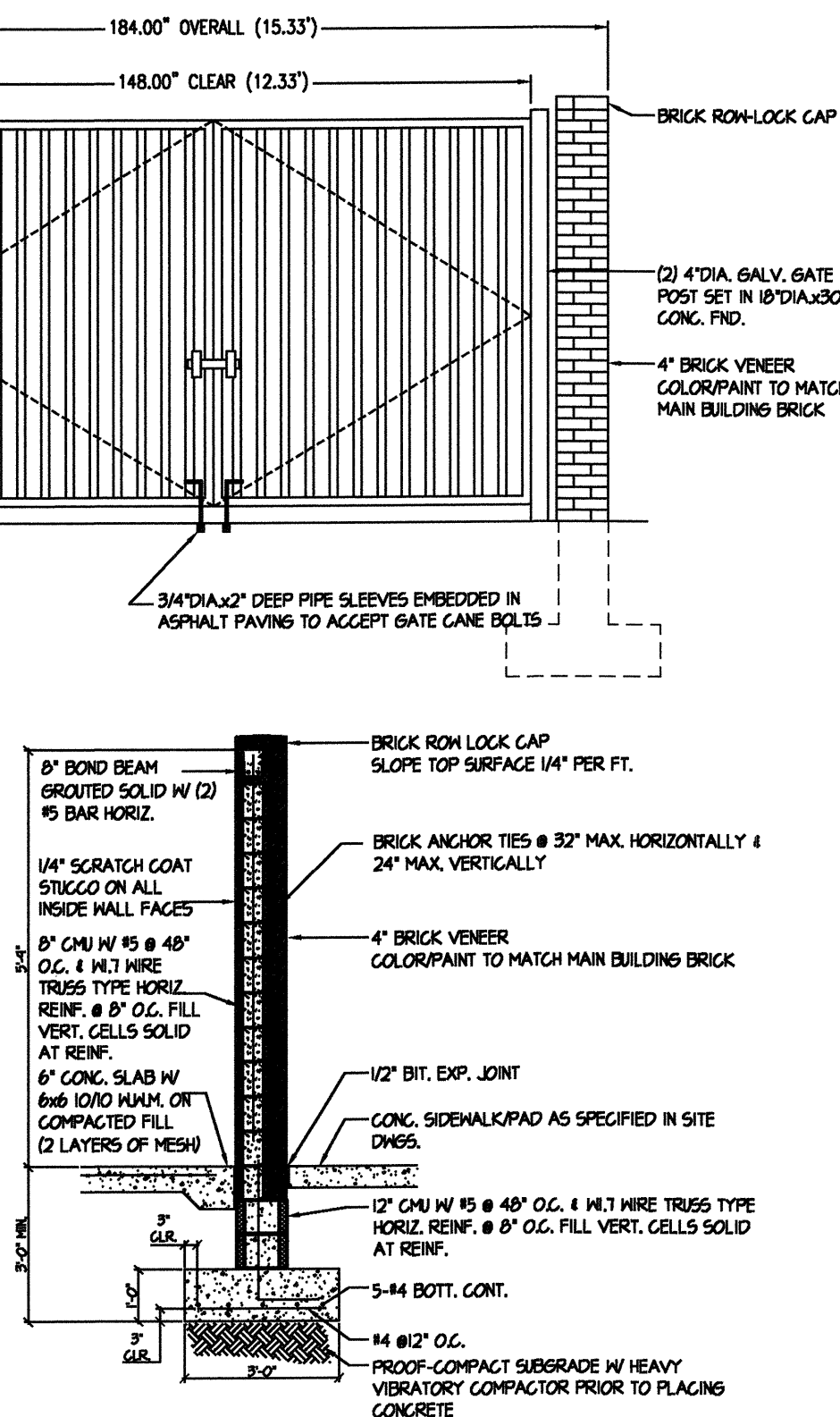


- NOTE:
- FOOTING DESIGN BY OTHERS.
 - CONTRACTOR SHALL SUBMIT SHOP DRAWINGS FOR APPROVAL.

POLE BASE DETAIL
N.T.S.

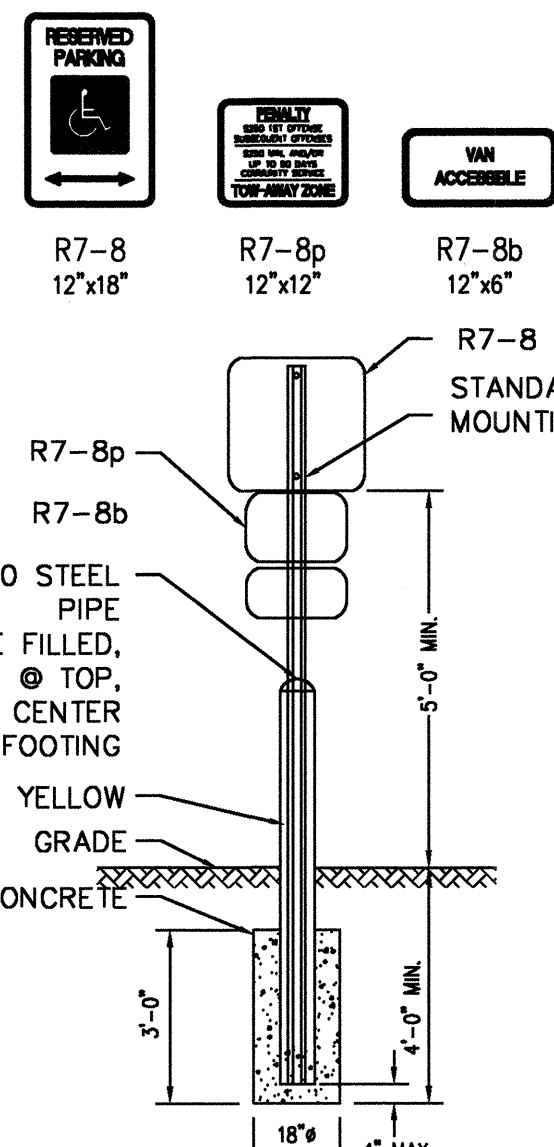


TRASH ENCLOSURE DETAIL
N.T.S.



STOP BAR DETAIL
N.T.S.

- NOTES:
- WORDS AND ARROWS FOR DRIVEWAYS SHALL BE APPLIED ACCORDING TO REQUIREMENTS OF THE MANUAL ON UNIFORM TRAFFIC CONTROL DEVICES FOR STREETS AND HIGHWAYS.
 - THESE WORDS AND BAR ARE TO BE PAINTED REFLECTIVE WHITE.

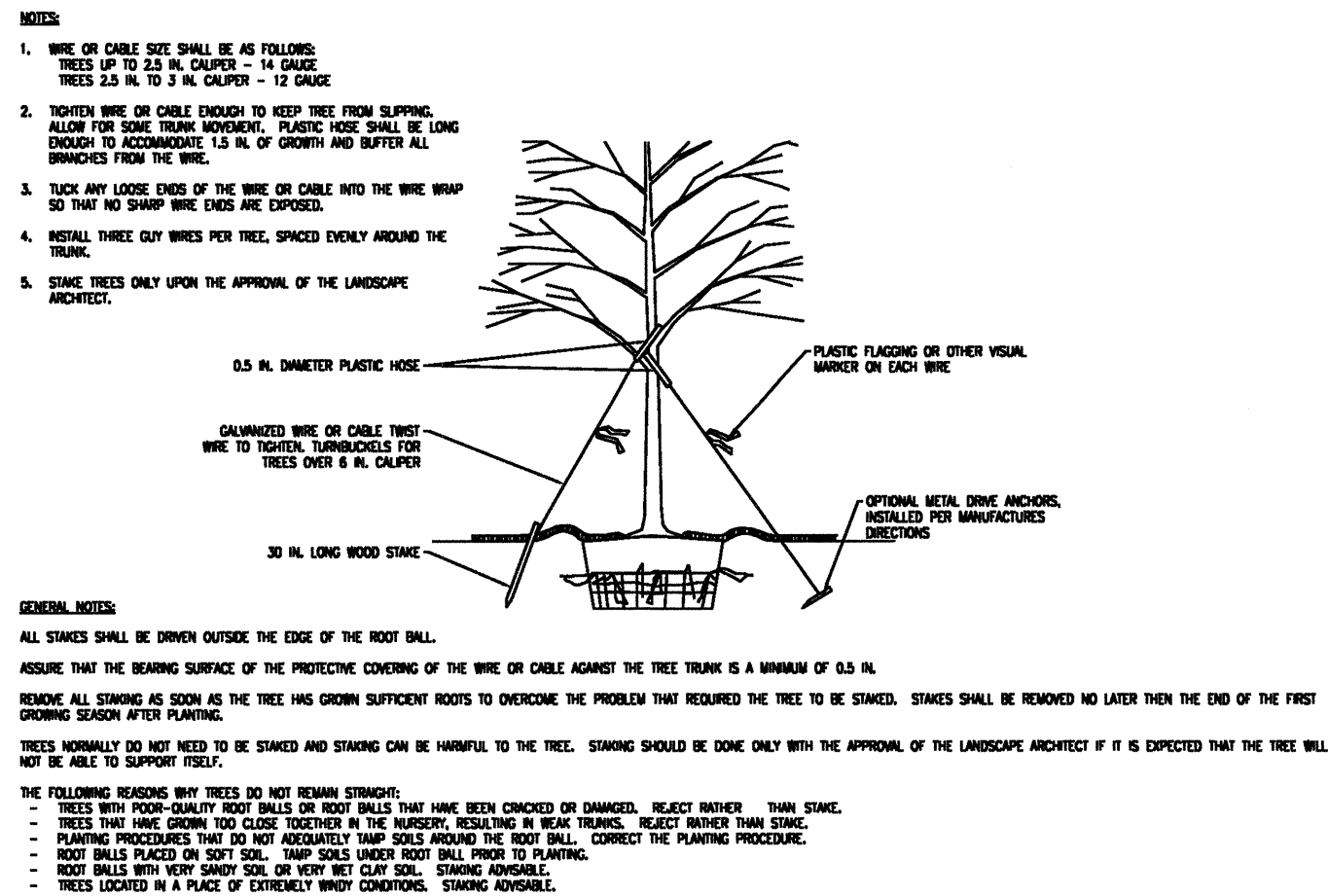


SIGN MOUNTING DETAIL WITH BOLLARD
N.T.S.

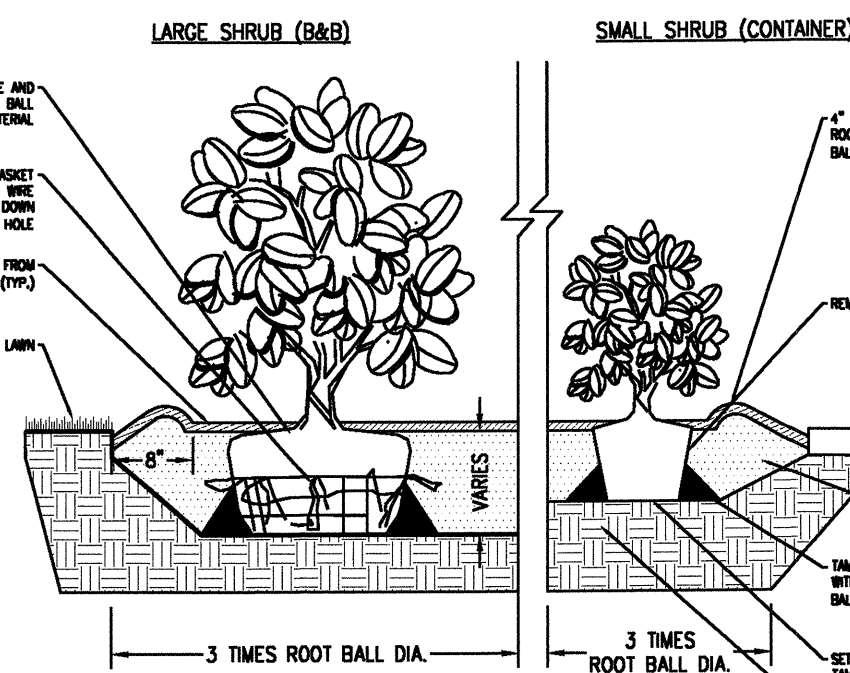
- NOTES:
- ALL POSTS SHALL BE OF ADEQUATE LENGTH TO MEET THE REQUIREMENTS FOR ERECTION AS STATED IN THE "MANUAL ON UNIFORM TRAFFIC CONTROL DEVICES FOR STREETS AND HIGHWAYS".
 - ALL POSTS AND BRACKETS SHALL BE CUT, BENT, AND HOLES PUNCHED AND DRILLED BEFORE GALVANIZING, WHICH SHALL BE IN CONFORMANCE WITH CURRENT A.S.T.M. SPECIFICATION A 123 ALL SIGNS SHALL CONFORM TO THE MANUAL ON TRAFFIC CONTROL DEVICES.
 - INSTALLATION, DIMENSIONS, COLOR, AND DETAILS OF VARIOUS SIZED SIGNS, SHIELDS, AND ACCESSORY PANELS TO FOLLOW STANDARDS IN THE CURRENT "STANDARD HIGHWAY SIGNS PUBLICATION" AND THE "MANUAL ON UNIFORM TRAFFIC CONTROL DEVICES FOR STREETS AND HIGHWAYS"
 - ALL SIGNS SHALL BE ERECTED WITH THE BOTTOM OF THE SIGN NOT LESS THAN SIX FEET (6') ABOVE THE PAVEMENT OR GROUND.
 - SIGNS, SIGN POSTS AND THEIR FOUNDATIONS AND SIGN MOUNTING SHALL BE SO CONSTRUCTED AS TO HOLD SIGNS IN A PROPER AND PERMANENT POSITION, TO RESIST SWAYING IN THE WIND OR DISPLACEMENT BY VANDALISM.

SIGN FACE:

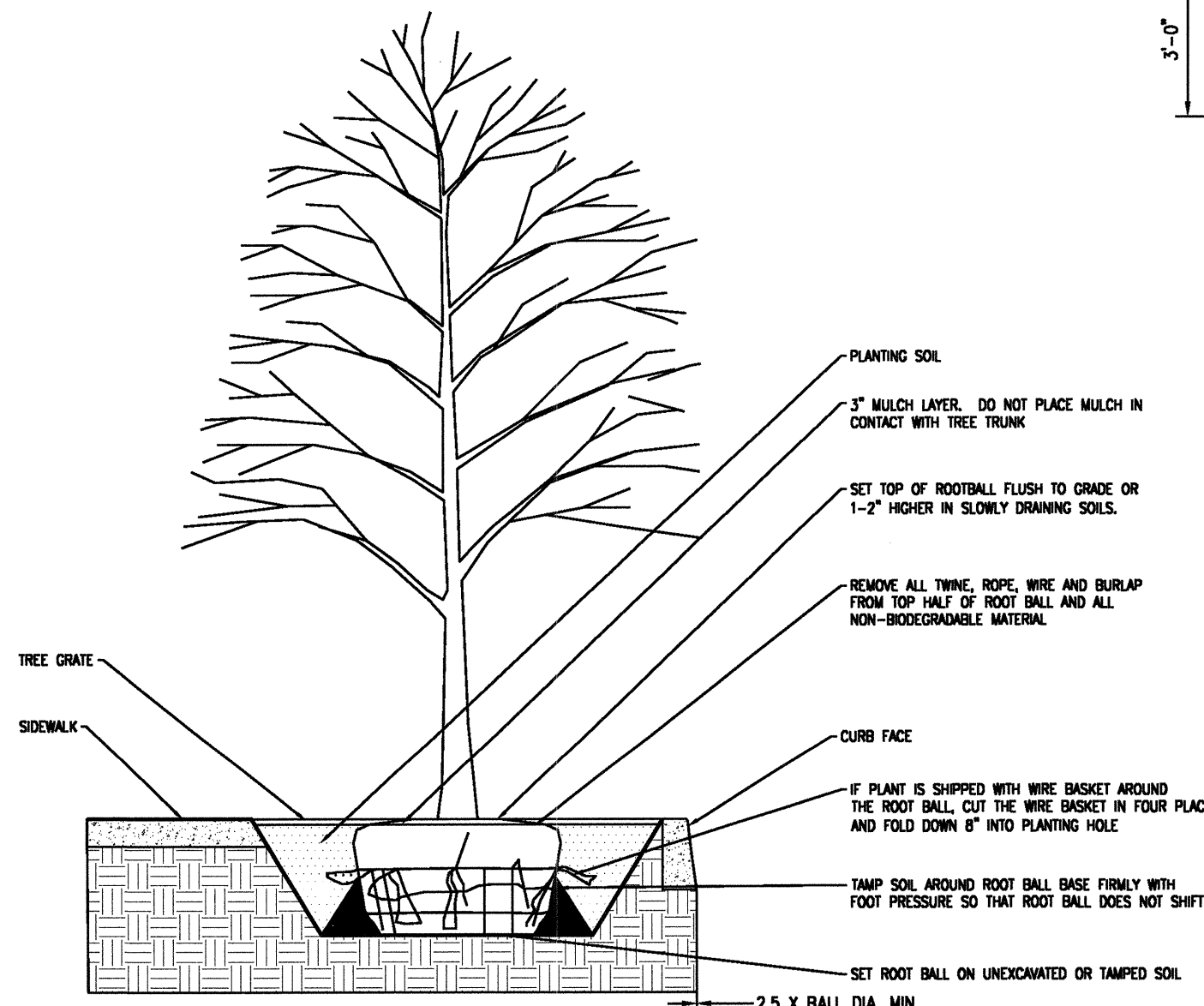
- LETTERS, SYMBOLS AND BORDERS SHALL BE REFLECTORIZED.
- ALL LETTERING SHALL BE UPPER CASE LETTERS OF THE TYPE APPROVED BY THE JOINT COMMITTEE ON UNIFORM TRAFFIC CONTROL DEVICES.
- ALL LETTERS SHALL BE SERIES "C" ALPHABET IN ACCORDANCE WITH THE "MANUAL ON UNIFORM TRAFFIC CONTROL DEVICES".



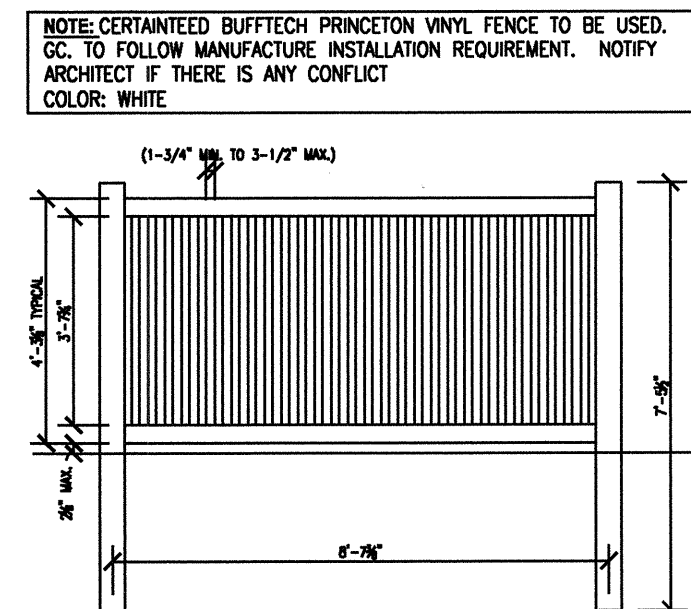
TREE STAKING DETAIL - TREES 3 INCH CALIPER OR LARGER
N.T.S.



SHRUB PLANTING
N.T.S.



DECIDUOUS TREE PLANTING
N.T.S.



VINYL FENCE DETAIL
N.T.S.

Jarmel Kizel
ARCHITECTS AND ENGINEERS INC.
42 OKNER PARKWAY
LIVINGSTON, NEW JERSEY 07039
TEL: 973-994-9669
FAX: 973-994-4069
www.jarmelkizel.com

Architecture
Engineering
Interior Design
Implementation Services

ISSUE

NO.	DATE	DESCRIPTION	INT.
1	1.17.19	FOR COMPLETENESS REVIEW	GPG
2	4.16.19	FOR MAY 6TH HEARING	GPG
3	5.17.19	FOR 6.3.19 PLANNING BOARD	GPG

REVISION

NO.	DATE	DESCRIPTION	INT.
1	5.8.19	PER MAY 4, 2019 REVIEW MEMO	APP

PRINCIPALS MATTHEW B. JARMEL, AIA, MBA AZ: UC 48150 CO: UC ARC401483 CT: UC AR0011415 DE: UC AR00101849 FL: UC AR098965 GA: UC AR0011484 IL: UC 05577 IN: UC 001020609 MD: UC 0000000 MI: UC 1201022189 NJ: UC 0000000 NY: UC 0000000 PA: UC 0000000 VA: UC 0000000 VT: UC 0000000	NJ: UC 120787 NH: UC 44044 NC: UC 10120 NH: UC 3801 NY: UC 0004673 OH: UC AR0912444 PA: UC AR014851-8 RI: UC AR0004745 SC: UC AR9143 TN: UC 103850 VA: UC 0000000 VT: UC 0000000 VT: UC 2453 VT: UC 2240027400 VT: UC 3800243100
IRWIN H. KIZEL, AIA, PE AZ: UC 48150 CO: UC ARC401483 CT: UC AR0011415 DE: UC AR00101849 FL: UC AR098965 GA: UC AR0011484 IL: UC 05577 IN: UC 001020609 MD: UC 0000000 MI: UC 1201022189 NJ: UC 0000000 NY: UC 0000000 PA: UC 0000000 VA: UC 0000000 VT: UC 0000000	NJ: UC 120787 NH: UC 44044 NC: UC 10120 NH: UC 3801 NY: UC 0004673 OH: UC AR0912444 PA: UC AR014851-8 RI: UC AR0004745 SC: UC AR9143 TN: UC 103850 VA: UC 0000000 VT: UC 0000000 VT: UC 2453 VT: UC 2240027400 VT: UC 3800243100

THE LEARNING EXPERIENCE
109 & 115 SOUTH ORANGE AVENUE WEST
TOWNSHIP OF SOUTH ORANGE VILLAGE
ESSEX COUNTY, NJ
BLOCK 1904, LOTS 16&17

Project No:	Scale:
TLENJ-S-17-264	AS NOTED
Drawn By:	Approved By:
LB	GPG

DETAIL SHEET

Drawing Number:	C-901
Sheet No:	10 of 13
Initial Date:	JANUARY 3, 2019
GERARD P. GESARIO PROFESSIONAL ENGINEER N.J. LIC. #06038255	