

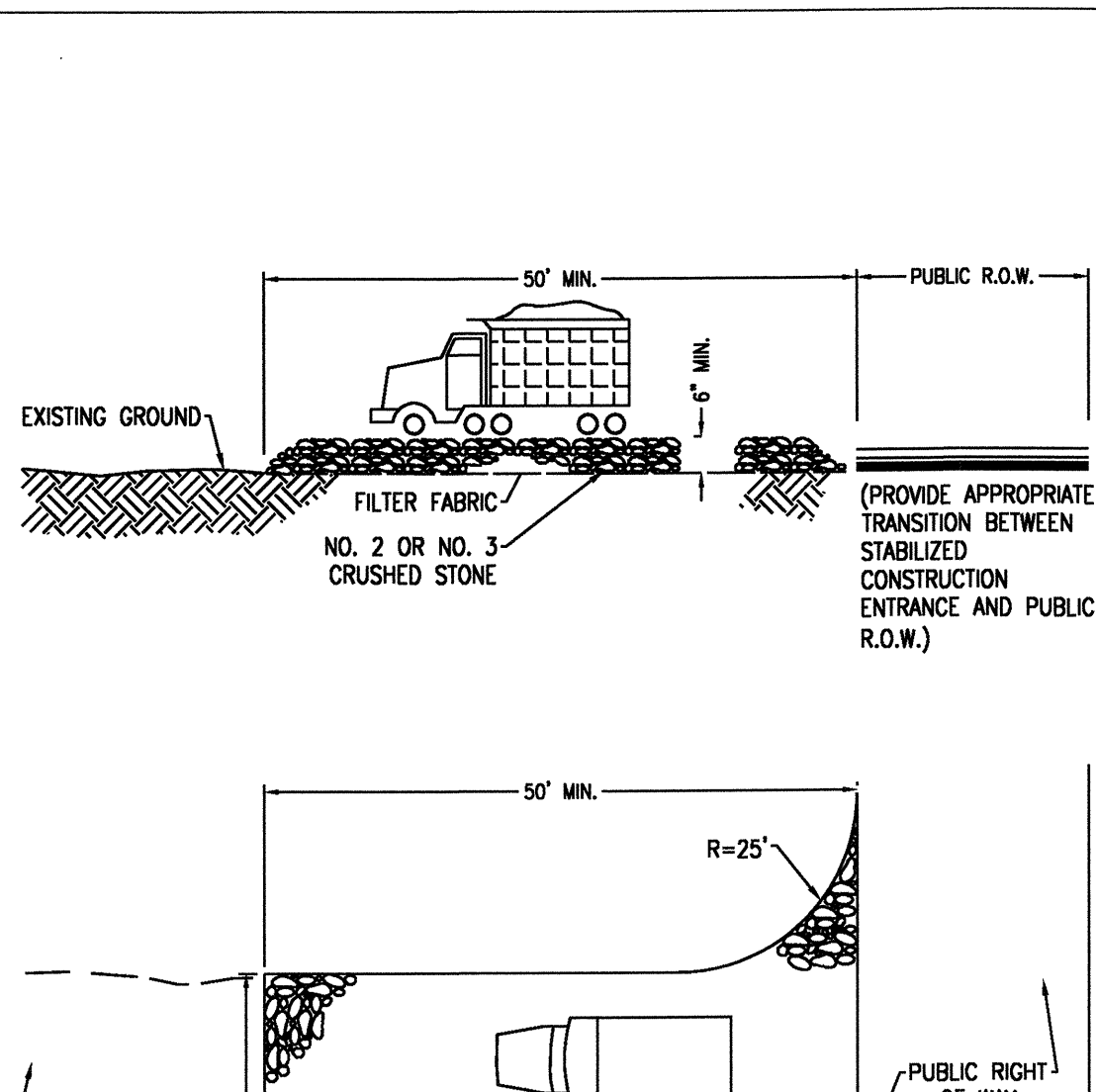
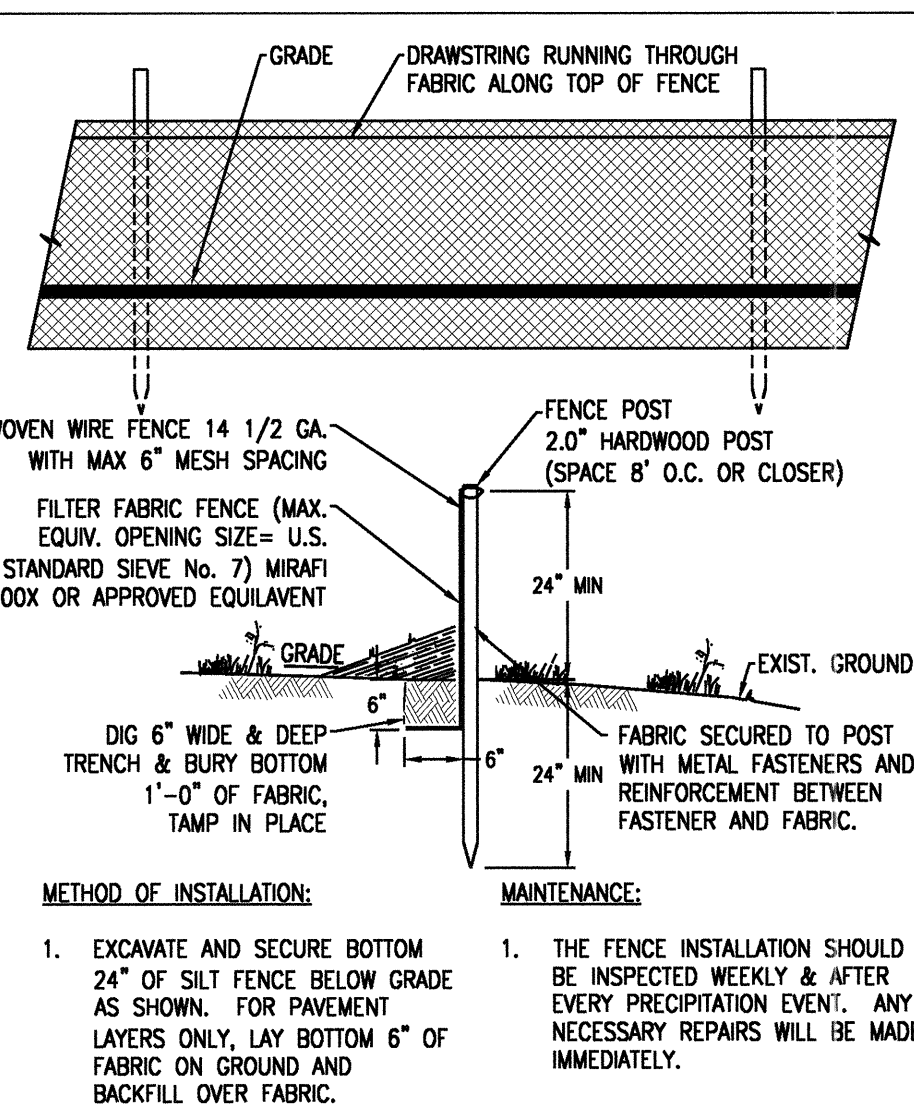
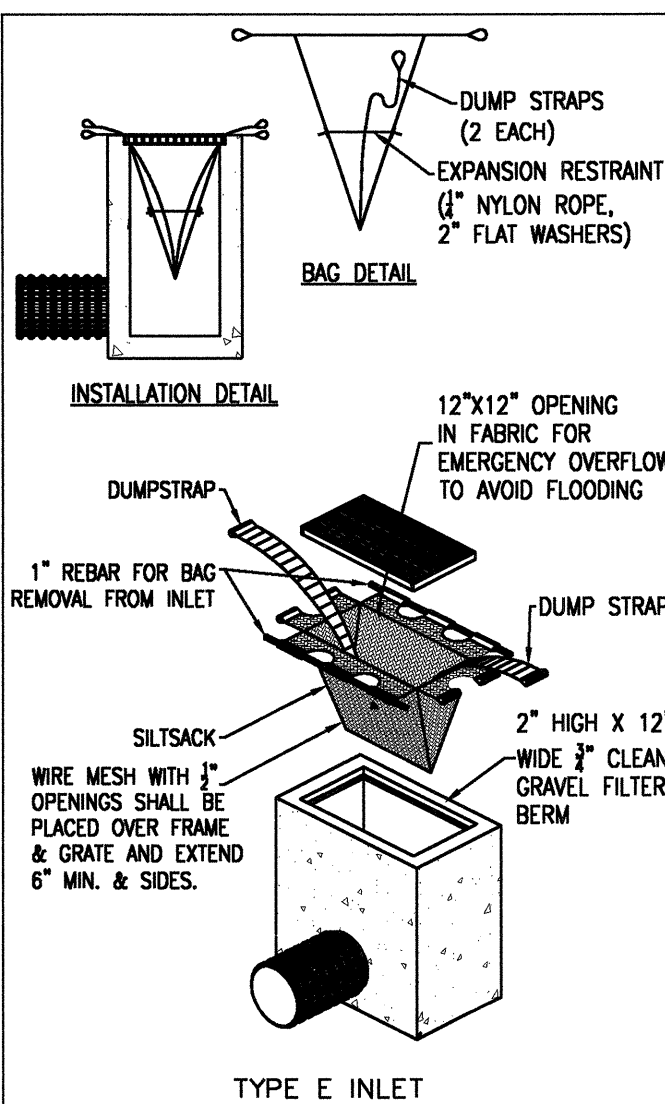
SOIL EROSION AND SEDIMENT CONTROL NOTES
(To be included on the signed erosion control plan sheet)

- All soil erosion and sediment control practices on this plan will be constructed in accordance with the "New Jersey Standards for Soil Erosion and Sediment Control" 7th Edition last revised December 2017. These measures will be installed prior to any major soil disturbance or in their proper sequence and maintained until permanent protection is established.
- All soil to be exposed or stockpiled for a period of greater than 14 days, and not under active construction, will be temporarily seeded and hay mulched or otherwise provided with vegetative cover. This temporary cover shall be maintained until such time whereby permanent revegetation is established.
- Seeding Dates:** The following seeding dates are recommended to best establish permanent vegetative cover within most locations in the HEPSCD: **Spring** - 3/1-5/15 and **Fall** - 8/15 - 10/1
- Sediment fences are to be properly trenched and maintained until permanent vegetative cover is established
- All storm drainage inlets shall be protected by one of the practices accepted in the Standards, and protection shall remain until permanent stabilization has been established. Storm drainage outlet points shall be protected as required before they become functional.
- Mulch materials shall be un-rotted small grain straw applied at the rate of 70 to 90 pounds per 1,000 square feet and anchored with a mulch anchoring tool, liquid mulch binders, or netting tie down. Other suitable materials may be used if approved by the Soil Conservation District.
- All erosion control devices shall be periodically inspected, maintained and corrected by the contractor. Any damage incurred by erosion shall be rectified immediately.
- The Hudson-Essex-Passaic Soil Conservation District will be notified in writing at least 48 hours prior to any soil disturbing activities. **Fax - (862) 333-4507 OR email - INFORMATION@HEPSCD.ORG**
- The applicant must obtain a District issued Report-of-Compliance prior to applying for the Certificate of Occupancy or Temporary Certificate of Occupancy from the respective municipality. NJ - DCA or any other controlling agency. Contact the District at 862-333-4505 to request a Final Inspection, giving advanced notice upon completion of the revegetation measures. A performance deposit may be posted with the District when winter weather or snow cover prohibits the proper application of seed, mulch, fertilizer or hydro-seed.
- Paved roadways must be kept clean at all times. Do not utilize a fire or garden hose to clean roads unless the runoff is directed to a properly designed and functioning sediment basin. Water pumped out of the excavated areas contains sediments that must be removed prior to discharging to receiving bodies of water using removable pumping stations, sump pits, portable sedimentation tanks and/or silt control bags.
- All surfaces having lawn or landscaping as final cover are to be provided topsoil prior to re-seeding, sodding or planting. A depth of 5.0 inches, firmed in place, is required, as per the Standards for Topsoiling and Land Grading, last revised December 2017.
- All plan revisions must be submitted to the District for proper review and approval.
- A crushed stone wheel cleaning tracking-pad is to be installed at all site exits using 2 1/2" - 1" crushed angular stone (ASTM 2 or 3) to a minimum length of 50 feet and minimum depth of 6". All driveways must be provided with crushed stone until paving is complete.
- Steep slopes incurring disturbance may require additional stabilization measures. These "special" measures shall be designed by the applicant's engineer and be approved by the Soil Conservation District.
- The Hudson-Essex-Passaic Soil Conservation District shall be notified, in writing, for the sale of any portion of the project or for the sale of individual lots. New owners information shall be provided. Additional measures deemed necessary by District officials shall be implemented as conditions warrant.

SEQUENCE OF CONSTRUCTION:

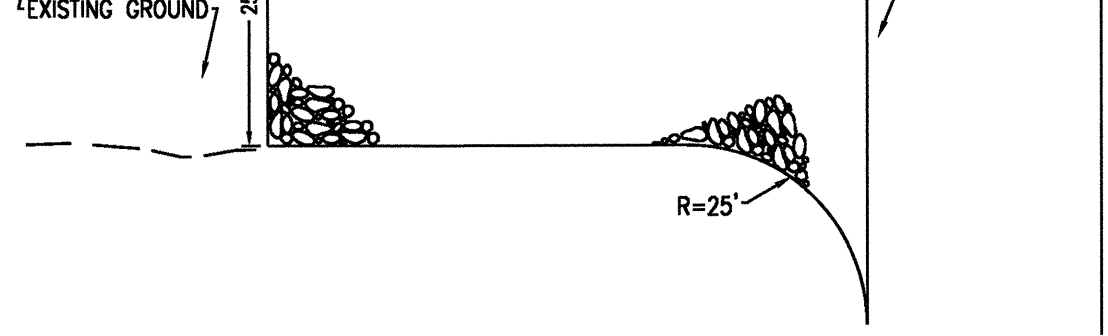
ITEM	DURATION
1. INSTALL SOIL EROSION MEASURES.	1
2. DEMO SITE	20
3. GRADE SITE FOR BUILDING AND PAVEMENT	5
4. CONSTRUCT STORM SYSTEM	5
5. CONSTRUCT BUILDING AND PLAY AREA	200
6. CONNECT UTILITIES	5
7. INSTALL NEW CURB	5
8. POUR NEW WALKWAYS	5
9. RECONSTRUCT DRIVEWAY	2
10. PAVE PARKING AREA	4
11. INSTALL PAVEMENT STRIPING & MARKINGS	1
12. INSTALL LANDSCAPING AND SIGNAGE	2
13. REMOVE SOIL EROSION MEASURES.	1

TOTAL: 256 DAYS

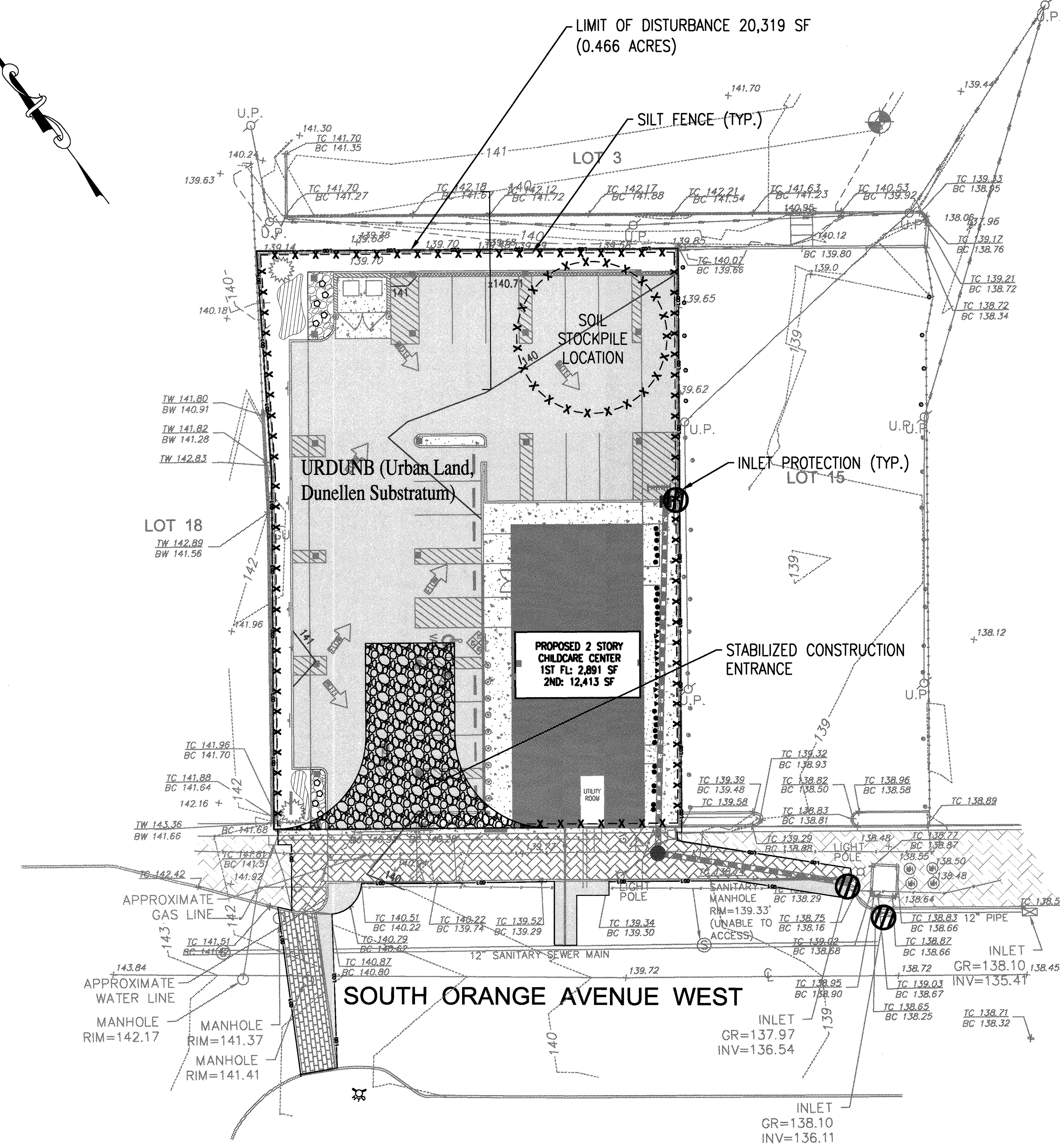


- NOTES:**
- CONTRACTOR IS TO CLEAN INLET FILTER AFTER EVERY STORM.
 - CONTRACTOR TO REMOVE FABRIC AND MESH JUST PRIOR TO PAVING.
 - THE PROTECTION DEVICE WILL BE DESIGNED TO CAPTURE OR FILTER RUNOFF FROM THE 1 YEAR, 24 HOUR STORM EVENT AND SHALL SAFELY CONVEY HIGHER FLOWS DIRECTLY INTO THE STORM SYSTEM

- METHOD OF INSTALLATION:**
- EXCAVATE AND SECURE BOTTOM 24\" OF SILT FENCE BELOW GRADE AS SHOWN. FOR PAVEMENT LAYERS ONLY, LAY BOTTOM 6\" OF FABRIC ON GROUND AND BACKFILL OVER FABRIC.
 - EXCEPT FOR THE END POST, DRIVE ALL POSTS INTO THE GROUND AT BACK SIDE OF TRENCH SPACED A MAXIMUM OF 8 FEET O.C.
 - ATTACH FILTER FABRIC TO POST AND STRETCH BETWEEN POSTS.
 - WHERE ENDS OF FABRIC COME TOGETHER, THEY WILL BE OVERLAPPED, FOLDED AND STAPLED TO PREVENT SEDIMENT BYPASS.
- MAINTENANCE:**
- THE FENCE INSTALLATION SHOULD BE INSPECTED WEEKLY & AFTER EVERY PRECIPITATION EVENT. ANY NECESSARY REPAIRS WILL BE MADE IMMEDIATELY.
 - ACCUMULATED SEDIMENTS WILL BE REMOVED AS REQUIRED TO KEEP THE FENCE FUNCTIONAL. IN ALL CASES, REMOVE DEPOSITS WHERE ACCUMULATIONS REACH 1/2 THE ABOVE GROUND HEIGHT OF THE FENCE.
 - ALL UNDERCUTTING OR EROSION OF THE TOE ANCHOR WILL BE REPAIRED IMMEDIATELY WITH ROCK.
 - ADHERE TO ANY MANUFACTURER'S RECOMMENDATIONS FOR REPLACING FILTER FABRIC FENCE DUE TO WEATHERING.



LEGEND	
PROPERTY LINE	---
CONSTRUCTION ENTRANCE	XXXXXX
SILT FENCE	XXXXXX
LIMIT OF DISTURBANCE	---
SOIL TYPE	URDUNB: URBAN LAND, DUNELLEN SUBSTRATUM, 0% TO 8% SLOPES



0 10 20 40



Jarmel Kizel

ARCHITECTS AND ENGINEERS INC.
42 OKNER PARKWAY
LIVINGSTON, NEW JERSEY 07039
TEL: 973-994-9669
FAX: 973-994-4069
www.jarmelkizel.com

Architecture
Engineering
Interior Design
Implementation Services

ISSUE

NO.	DATE	DESCRIPTION	INT.
1	1.17.19	FOR COMPLETENESS REVIEW	GPG
2	4.16.19	FOR MAY 6TH HEARING	GPG
3	5.17.19	FOR 6.3.19 PLANNING BOARD	GPG

REVISION

NO.	DATE	DESCRIPTION	INT.
1	5.8.19	PER MAY 4, 2019 REVIEW MEMO	APP

PRINCIPALS

MATTHEW B. JARMEL, AIA, MBA AZ UC 48159 CO UC 48240483 CT UC A00011415 DC UC A00010849 DE UC 35-0007254 FL UC A089665 GA UC A0011484 IA UC 00577 IL UC 001-020949 IN UC A410286 MD UC 12062 NC UC 1501020189 NJ UC 21400294700 NY UC 08522 OH UC 08522 PA UC 08522 RI UC 08522 SC UC 08522 TN UC 08522 TX UC 08522	RICHARD A. JARMEL, PE AZ UC 48159 CO UC 48240483 CT UC A00011415 DC UC A00010849 DE UC 35-0007254 FL UC A089665 GA UC A0011484 IA UC 00577 IL UC 001-020949 IN UC A410286 MD UC 12062 NC UC 1501020189 NJ UC 21400294700 NY UC 08522 OH UC 08522 PA UC 08522 RI UC 08522 SC UC 08522 TN UC 08522 TX UC 08522
---	---

ASSOCIATES

RONALD A. BROCKENHURST, PE AZ UC 48159 CO UC 48240483 CT UC A00011415 DC UC A00010849 DE UC 35-0007254 FL UC A089665 GA UC A0011484 IA UC 00577 IL UC 001-020949 IN UC A410286 MD UC 12062 NC UC 1501020189 NJ UC 21400294700 NY UC 08522 OH UC 08522 PA UC 08522 RI UC 08522 SC UC 08522 TN UC 08522 TX UC 08522	DAVID L. LESSENE, BA AZ UC 48159 CO UC 48240483 CT UC A00011415 DC UC A00010849 DE UC 35-0007254 FL UC A089665 GA UC A0011484 IA UC 00577 IL UC 001-020949 IN UC A410286 MD UC 12062 NC UC 1501020189 NJ UC 21400294700 NY UC 08522 OH UC 08522 PA UC 08522 RI UC 08522 SC UC 08522 TN UC 08522 TX UC 08522
--	--

ASSOCIATES

GERARD P. GESARIO, PE AZ UC 48159 CO UC 48240483 CT UC A00011415 DC UC A00010849 DE UC 35-0007254 FL UC A089665 GA UC A0011484 IA UC 00577 IL UC 001-020949 IN UC A410286 MD UC 12062 NC UC 1501020189 NJ UC 21400294700 NY UC 08522 OH UC 08522 PA UC 08522 RI UC 08522 SC UC 08522 TN UC 08522 TX UC 08522	GERARD P. GESARIO, PE AZ UC 48159 CO UC 48240483 CT UC A00011415 DC UC A00010849 DE UC 35-0007254 FL UC A089665 GA UC A0011484 IA UC 00577 IL UC 001-020949 IN UC A410286 MD UC 12062 NC UC 1501020189 NJ UC 21400294700 NY UC 08522 OH UC 08522 PA UC 08522 RI UC 08522 SC UC 08522 TN UC 08522 TX UC 08522
---	---

ASSOCIATES

CHERYL SCHWENKER, AIA AZ UC 48159 CO UC 48240483 CT UC A00011415 DC UC A00010849 DE UC 35-0007254 FL UC A089665 GA UC A0011484 IA UC 00577 IL UC 001-020949 IN UC A410286 MD UC 12062 NC UC 1501020189 NJ UC 21400294700 NY UC 08522 OH UC 08522 PA UC 08522 RI UC 08522 SC UC 08522 TN UC 08522 TX UC 08522	CHERYL SCHWENKER, AIA AZ UC 48159 CO UC 48240483 CT UC A00011415 DC UC A00010849 DE UC 35-0007254 FL UC A089665 GA UC A0011484 IA UC 00577 IL UC 001-020949 IN UC A410286 MD UC 12062 NC UC 1501020189 NJ UC 21400294700 NY UC 08522 OH UC 08522 PA UC 08522 RI UC 08522 SC UC 08522 TN UC 08522 TX UC 08522
---	---

ASSOCIATES

THE LEARNING EXPERIENCE 109 & 115 SOUTH ORANGE AVENUE WEST TOWNSHIP OF SOUTH ORANGE VILLAGE ESSEX COUNTY, NJ BLOCK 1904, LOTS 168-17	THE LEARNING EXPERIENCE 109 & 115 SOUTH ORANGE AVENUE WEST TOWNSHIP OF SOUTH ORANGE VILLAGE ESSEX COUNTY, NJ BLOCK 1904, LOTS 168-17
---	---

ASSOCIATES

Project No:	Scale:
TLENJ-S-17-264	1" = 20'
Drawn By:	Approved By:
LB	GPG
Drawing Name:	

ASSOCIATES

Drawing Number:	
C-600	
Sheet No:	of:
6 13	
Initial Date:	
JANUARY 3, 2019	
	GERARD P. GESARIO PROFESSIONAL ENGINEER N.J. LIC. #GE038255