

VOSE AVENUE

50' R.O.W.

EXISTING CURB CUT TO REMAIN

PROPOSED SIGN SETBACK TO MATCH SETBACK OF EXISTING MONTROSE AVENUE (SCOTLAND ROAD) MONTROSE AVE (SCOTLAND ROAD)

NEW SIGN BY OWNER, G.C. TO PROVIDE FOOTINGS AND INSTALL (REFER TO DETAIL 2, THIS SHEET)

EXISTING MACADAM TO REMAIN

N 39°53'50" E

190.94

N 39°53'50" E

136.09

N 39°53'50" E

282.64

N 39°53'50" E

N 39°53'50" E

N 39°53'50" E

N 39°53'50" E

N 39°53'50" E

N 41°34' W

238.25'

N 41°34' W

N 41°34' W

N 41°34' W

N 41°34' W

N 41°34' W

N 41°34' W

N 41°34' W

N 41°34' W

N 41°34' W

N 50°44' E

197.46'

N 50°44' E

N 50°44' E

N 50°44' E

N 50°44' E

N 50°44' E

N 50°44' E

N 50°44' E

N 50°44' E

N 50°44' E

N 41°34' W

200.92'

N 41°34' W

N 41°34' W

N 41°34' W

N 41°34' W

N 41°34' W

N 41°34' W

N 41°34' W

N 41°34' W

N 41°34' W

N 41°06' W

451.68'

N 41°06' W

N 41°06' W

N 41°06' W

N 41°06' W

N 41°06' W

N 41°06' W

N 41°06' W

N 41°06' W

N 41°06' W

N 39°53'50" W

132.64'

N 39°53'50" W

N 39°53'50" W

N 39°53'50" W

N 39°53'50" W

N 39°53'50" W

N 39°53'50" W

N 39°53'50" W

N 39°53'50" W

N 39°53'50" W

N 41°06' W

200.00'

N 41°06' W

N 41°06' W

N 41°06' W

N 41°06' W

N 41°06' W

N 41°06' W

N 41°06' W

N 41°06' W

N 41°06' W

N 39°53'50" E

282.64'

N 39°53'50" E

N 39°53'50" E

N 39°53'50" E

N 39°53'50" E

N 39°53'50" E

N 39°53'50" E

N 39°53'50" E

N 39°53'50" E

N 39°53'50" E

N 41°06' W

150.00'

N 41°06' W

N 41°06' W

N 41°06' W

N 41°06' W

N 41°06' W

N 41°06' W

N 41°06' W

N 41°06' W

N 41°06' W

N 39°53'50" E

132.64'

N 39°53'50" E

N 39°53'50" E

N 39°53'50" E

N 39°53'50" E

N 39°53'50" E

N 39°53'50" E

N 39°53'50" E

N 39°53'50" E

N 39°53'50" E

N 41°06' W

150.00'

N 41°06' W

N 41°06' W

N 41°06' W

N 41°06' W

N 41°06' W

N 41°06' W

N 41°06' W

N 41°06' W

N 41°06' W

N 39°53'50" E

132.64'

N 39°53'50" E

N 39°53'50" E

N 39°53'50" E

N 39°53'50" E

N 39°53'50" E

N 39°53'50" E

N 39°53'50" E

N 39°53'50" E

N 39°53'50" E

N 41°06' W

150.00'

N 41°06' W

N 41°06' W

N 41°06' W

N 41°06' W

N 41°06' W

N 41°06' W

N 41°06' W

N 41°06' W

N 41°06' W

N 39°53'50" E

132.64'

N 39°53'50" E

N 39°53'50" E

N 39°53'50" E

N 39°53'50" E

N 39°53'50" E

N 39°53'50" E

N 39°53'50" E

N 39°53'50" E

N 39°53'50" E

N 41°06' W

150.00'

N 41°06' W

N 41°06' W

N 41°06' W

N 41°06' W

N 41°06' W

N 41°06' W

N 41°06' W

N 41°06' W

N 41°06' W

N 39°53'50" E

132.64'

N 39°53'50" E

N 39°53'50" E

N 39°53'50" E

N 39°53'50" E

N 39°53'50" E

N 39°53'50" E

N 39°53'50" E

N 39°53'50" E

N 39°53'50" E

N 41°06' W

150.00'

N 41°06' W

N 41°06' W

N 41°06' W

N 41°06' W

N 41°06' W

N 41°06' W

N 41°06' W

N 41°06' W

N 41°06' W

N 39°53'50" E

132.64'

N 39°53'50" E

N 39°53'50" E

N 39°53'50" E

N 39°53'50" E

N 39°53'50" E

N 39°53'50" E

N 39°53'50" E

N 39°53'50" E

N 39°53'50" E

N 41°06' W

150.00'

N 41°06' W

N 41°06' W

N 41°06' W

N 41°06' W

N 41°06' W

N 41°06' W

N 41°06' W

N 41°06' W

N 41°06' W

N 39°53'50" E

132.64'

N 39°53'50" E

N 39°53'50" E

N 39°53'50" E

N 39°53'50" E

N 39°53'50" E

N 39°53'50" E

N 39°53'50" E

N 39°53'50" E

N 39°53'50" E

N 41°06' W

150.00'

N 41°06' W

N 41°06' W

N 41°06' W

N 41°06' W

N 41°06' W

N 41°06' W

N 41°06' W

N 41°06' W

N 41°06' W

N 39°53'50" E

132.64'

N 39°53'50" E

N 39°53'50" E

N 39°53'50" E

N 39°53'50" E

N 39°53'50" E

N 39°53'50" E

N 39°53'50" E

N 39°53'50" E

N 39°53'50" E

1 SITE PLAN
SCALE: 1"=30'

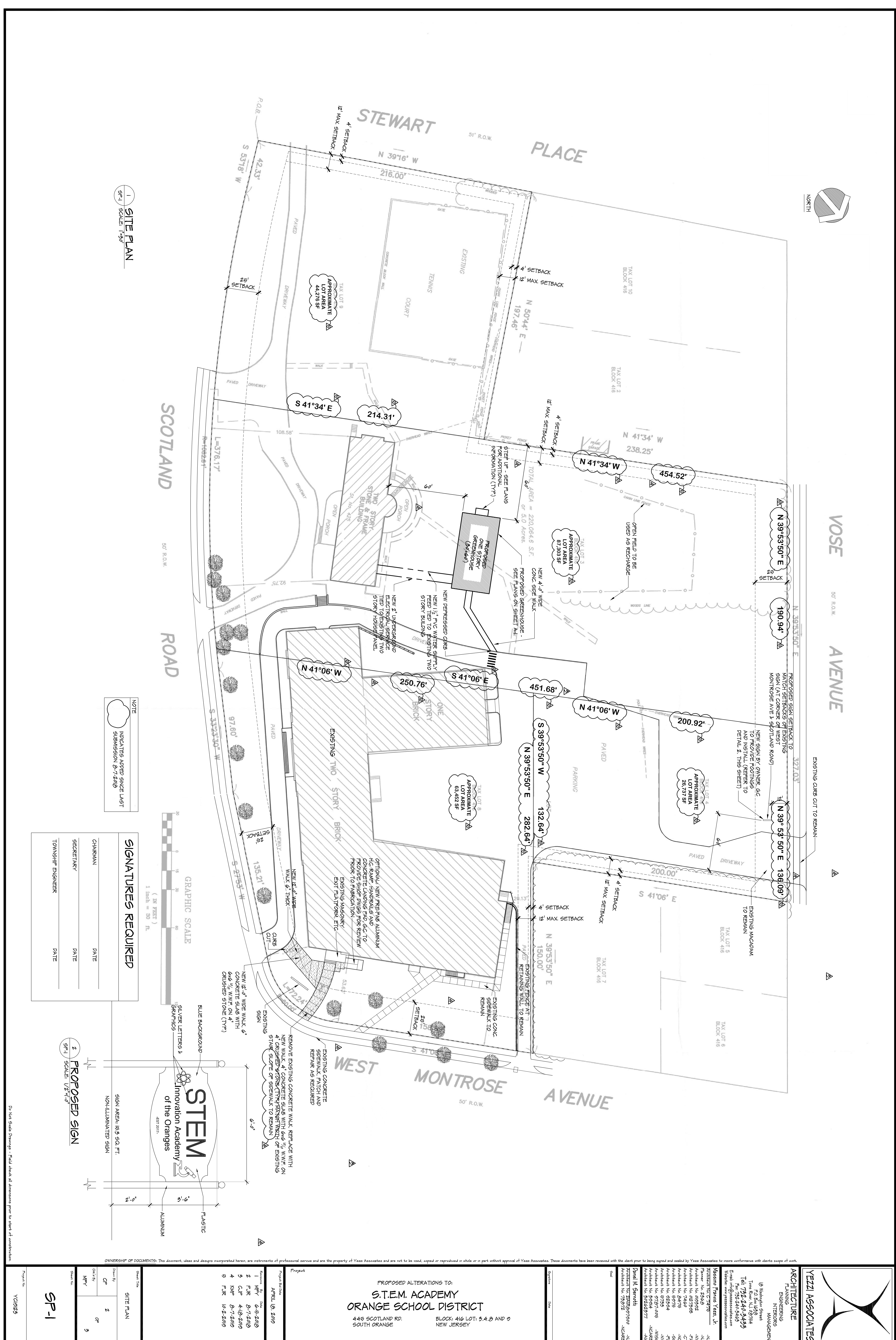
NOTE
INDICATES ADDED SINCE LAST SUBMISSION 8-7-2019

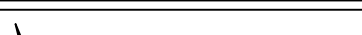
SIGNATURES REQUIRED
CHAIRMAN DATE
SECRETARY DATE
TOWNSHIP ENGINEER DATE

2 PROPOSED SIGN
SCALE: 1/2"=1'-0"

GRAPHIC SCALE
1 INCH = 30 FT.
BLUE BACKGROUND
SILVER LETTERS 1
of the Oranges
EST. 2017.

SP-1



	
VEZZI ARCHITECTURE	
PLANNING	
DESIGN	
INTERIORS	
MANAGEMENT	
10 Washington Street PO Box 1689 Trenton, NJ 08646 Tel: 732.240.5495 Fax: 732.240.5495 E-mail: info@vezzichitecture.com Website: www.vezzichitecture.com	
MEETING FRAMES VZZI, JR.	
Architect No. 00932	N
Architect No. 00932	N
Architect No. 00932	N
Architect No. 00932	N
Architect No. 00932	N
Architect No. 00932	N
Architect No. 00932	N
Architect No. 00932	N
Architect No. 00932	N
Architect No. 00932	N
Architect No. 00932	N
Architect No. 00932	N
Architect No. 00932	N
Architect No. 00932	N
Architect No. 00932	N
Architect No. 00932	N
Architect No. 00932	N
Architect No. 00932	N
Architect No. 00932	N
Architect No. 00932	N
Architect No. 00932	N
Architect No. 00932	N
Architect No. 00932	N
Architect No. 00932	N
Architect No. 00932	N
Architect No. 00932	N
Architect No. 00932	N
Architect No. 00932	N
Architect No. 00932	N
Architect No. 00932	N
Architect No. 00932	N
Architect No. 00932	N
Architect No. 00932	N
Architect No. 00932	N
Architect No. 00932	N
Architect No. 00932	N
Architect No. 00932	N
Architect No. 00932	N
Architect No. 00932	N
Architect No. 00932	N
Architect No. 00932	N
Architect No. 00932	N
Architect No. 00932	N
Architect No. 00932	N
Architect No. 00932	N
Architect No. 00932	N
Architect No. 00932	N
Architect No. 00932	N
Architect No. 00932	N
Architect No. 00932	N
Architect No. 00932	N
Architect No. 00932	N
Architect No. 00932	N
Architect No. 00932	N
Architect No. 00932	N
Architect No. 00932	N
Architect No. 00932	N
Architect No. 00932	N
Architect No. 00932	N
Architect No. 00932	N
Architect No. 00932	N
Architect No. 00932	N
Architect No. 00932	N
Architect No. 00932	N
Architect No. 00932	N
Architect No. 00932	N
Architect No. 00932	N
Architect No. 00932	N
Architect No. 00932	N
Architect No. 00932	N
Architect No. 00932	N
Architect No. 00932	N
Architect No. 00932	N
Architect No. 00932	N
Architect No. 00932	N
Architect No. 00932	N
Architect No. 00932	N
Architect No. 00932	N
Architect No. 00932	N
Architect No. 00932	N
Architect No. 00932	N
Architect No. 00932	N
Architect No. 00932	N
Architect No. 00932	N
Architect No. 00932	N
Architect No. 00932	N
Architect No. 00932	N
Architect No. 00932	N
Architect No. 00932	N
Architect No. 00932	N
Architect No. 00932	N
Architect No. 00932	N
Architect No. 00932	N
Architect No. 00932	N
Architect No. 00932	N
Architect No. 00932	N
Architect No. 00932	N
Architect No. 00932	N
Architect No. 00932	N
Architect No. 00932	N
Architect No. 00932	N
Architect No. 00932	N
Architect No. 00932	N
Architect No. 00932	N
Architect No. 00932	N
Architect No. 00932	N
Architect No. 00932	N
Architect No. 00932	N
Architect No. 00932	N
Architect No. 00932	N
Architect No. 00932	N
Architect No. 00932	N
Architect No. 00932	N
Architect No. 00932	N
Architect No. 00932	N
Architect No. 00932	N
Architect No. 00932	N
Architect No. 00932	N
Architect No. 00932	N
Architect No. 00932	N
Architect No. 00932	N
Architect No. 00932	N
Architect No. 00932	N
Architect No. 00932	N
Architect No. 00932	N
Architect No. 00932	N
Architect No. 00932	N
Architect No. 00932	N
Architect No. 00932	N
Architect No. 00932	N
Architect No. 00932	N
Architect No. 00932	N
Architect No. 00932	N
Architect No. 00932	N
Architect No. 00932	N
Architect No. 00932	N
Architect No. 00932	N
Architect No. 00932	N
Architect No. 00932	N
Architect No. 00932	N
Architect No. 00932	N
Architect No. 00932	N
Architect No. 00932	N
Architect No. 00932	N
Architect No. 00932	N
Architect No. 00932	N
Architect No. 00932	N
Architect No. 00932	N
Architect No. 00932	N
Architect No. 00932	N
Architect No. 00932	N
Architect No. 00932	N
Architect No. 00932	N
Architect No. 00932	N
Architect No. 00932	N
Architect No. 00932	N
Architect No. 00932	N
Architect No. 00932	N
Architect No. 00932	N
Architect No. 00932	N
Architect No. 00932	N
Architect No. 00932	N
Architect No. 00932	N
Architect No. 00932	N
Architect No. 00932	N
Architect No. 00932	N
Architect No. 00932	N
Architect No. 00932	N
Architect No. 00932	N
Architect No. 00932	N
Architect No. 00932	N
Architect No. 00932	N
Architect No. 00932	N
Architect No. 00932	N
Architect No. 00932	N
Architect No. 00932	N
Architect No. 00932	N
Architect No. 00932	N
Architect No. 00932	N
Architect No. 00932	N
Architect No. 00932	N
Architect No. 00932	N
Architect No. 00932	N
Architect No. 00932	N
Architect No. 00932	N
Architect No. 00932	N
Architect No. 00932	N
Architect No. 00932	N
Architect No. 00932	N
Architect No. 00932	N
Architect No. 00932	N
Architect No. 00932	N
Architect No. 00932	N
Architect No. 00932	N
Architect No. 00932	N
Architect No. 00932	N
Architect No. 00932	N
Architect No. 00932	N
Architect No. 00932	N
Architect No. 00932	N
Architect No. 00932	N
Architect No. 00932	N
Architect No. 00932	N
Architect No. 00932	N
Architect No. 00932	N
Architect No. 00932	N
Architect No. 00932	N
Architect No. 00932	N
Architect No. 00932	N
Architect No. 00932	N
Architect No. 00932	N
Architect No. 00932	N
Architect No. 00932	N
Architect No. 00932	N
Architect No. 00932	N
Architect No. 00932	N
Architect No. 00932	N
Architect No. 00932	N
Architect No. 00932	N
Architect No. 00932	N
Architect No. 00932	N
Architect No. 00932	N
Architect No. 00932	N
Architect No. 00932	N
Architect No. 00932	N
Architect No. 00932	N
Architect No. 00932	N
Architect No. 00932	N
Architect No. 00932	N
Architect No. 00932	N
Architect No. 00932	N
Architect No. 00932	N
Architect No. 00932	N
Architect No. 00932	N
Architect No. 00932	N
Architect No. 00932	N
Architect No. 00932	N
Architect No. 00932	N
Architect No. 00932	N
Architect No. 00932	N
Architect No. 00932	N
Architect No. 00932	N
Architect No. 00932	N
Architect No. 00932	N
Architect No. 00932	N
Architect No. 00932	N
Architect No. 00932	N
Architect No. 00932	N
Architect No. 00932	N
Architect No. 00932	N
Architect No. 00932	N
Architect No. 00932	N
Architect No. 00932	N
Architect No. 00932	N
Architect No. 00932	N
Architect No. 00932	N
Architect No. 00932	N
Architect No. 00932	N
Architect No. 00932	N
Architect No. 00932	N
Architect No. 00932	N
Architect No. 00932	N
Architect No. 00932	N
Architect No. 00932	N
Architect No. 00932	N
Architect No. 00932	N
Architect No. 00932	N
Architect No. 00932	N
Architect No. 00932	N
Architect No. 00932	N
Architect No. 00932	N
Architect No. 00932	N
Architect No. 00932	N
Architect No. 00932	N
Architect No. 00932	N
Architect No. 00932	N
Architect No. 00932	N
Architect No. 00932	N
Architect No.	