



106 kings highway east  
haddonfield nj 08033  
856.203.6061  
www.haleydonovan.com



consultant:

**M E R I D I A**  
**VILLAGE-COMMONS**  
**PROPOSED MIXED USE BUILDING**

BLOCK 2303, LOTS 7, 8, 9, 10 & 11  
SOUTH ORANGE VILLAGE, NJ. 07079 ESSEX COUNTY

[illegible]

SCALE: AS NOTED

DRAWN BY: FB MD FA

CHK'D BY: MD. JH

COPYRIGHT © HALEY DONOVAN ARCHITECTURE 2016

CS

COVERSHEET



# MERIDIA VILLAGE - COMMONS

# South Orange NJ





106 kings highway east  
haddonfield nj 08033  
856.203.6061  
www.haleydonovan.com



consultant

**M E R I D I A**  
**VILLAGE-COMMONS**  
**PROPOSED MIXED USE BUILDING**

BLOCK 2303, LOTS 7, 8, 9, 10 & 11  
SOUTH ORANGE VILLAGE, NJ. 07079 ESSEX COUNTY

[illegible]

SCALE: AS NOTED

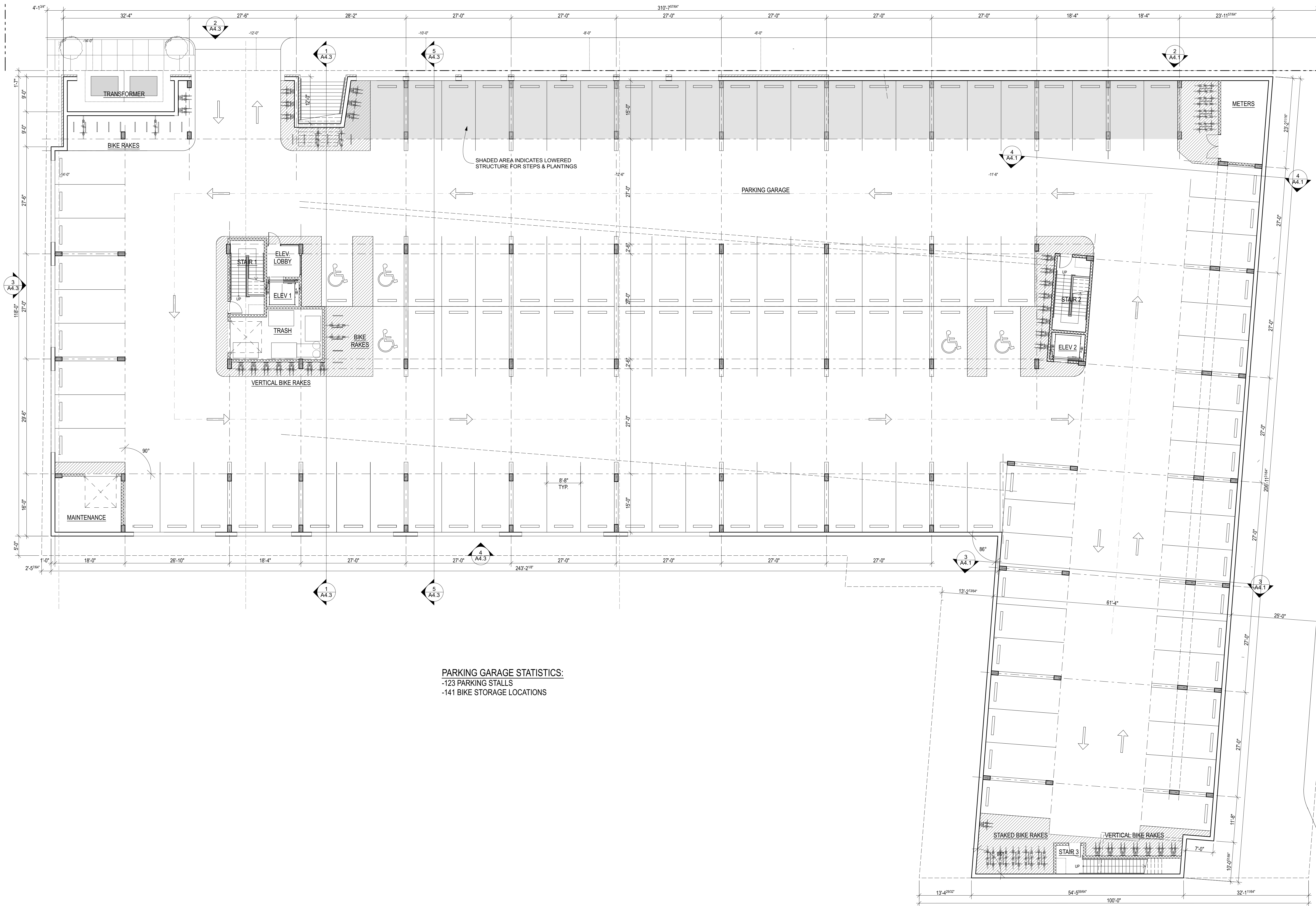
DRAWN BY: FB, MD, EA

CHK'D BY: MD, JH

COPYRIGHT © HALEY DONOVAN ARCHITECTURE 2010

## A1.1

## PARKING LEVEL PLAN



**PARKING GARAGE STATISTICS:**  
-123 PARKING STALLS  
-141 BIKE STORAGE LOCATIONS

1  
A1.1

## LOWER FLOOR PLAN

SCALE: 3/32" = 1'-0"





106 kings highway east  
haddonfield nj 08033  
856.203.6061  
www.haleydonovan.com



consultant

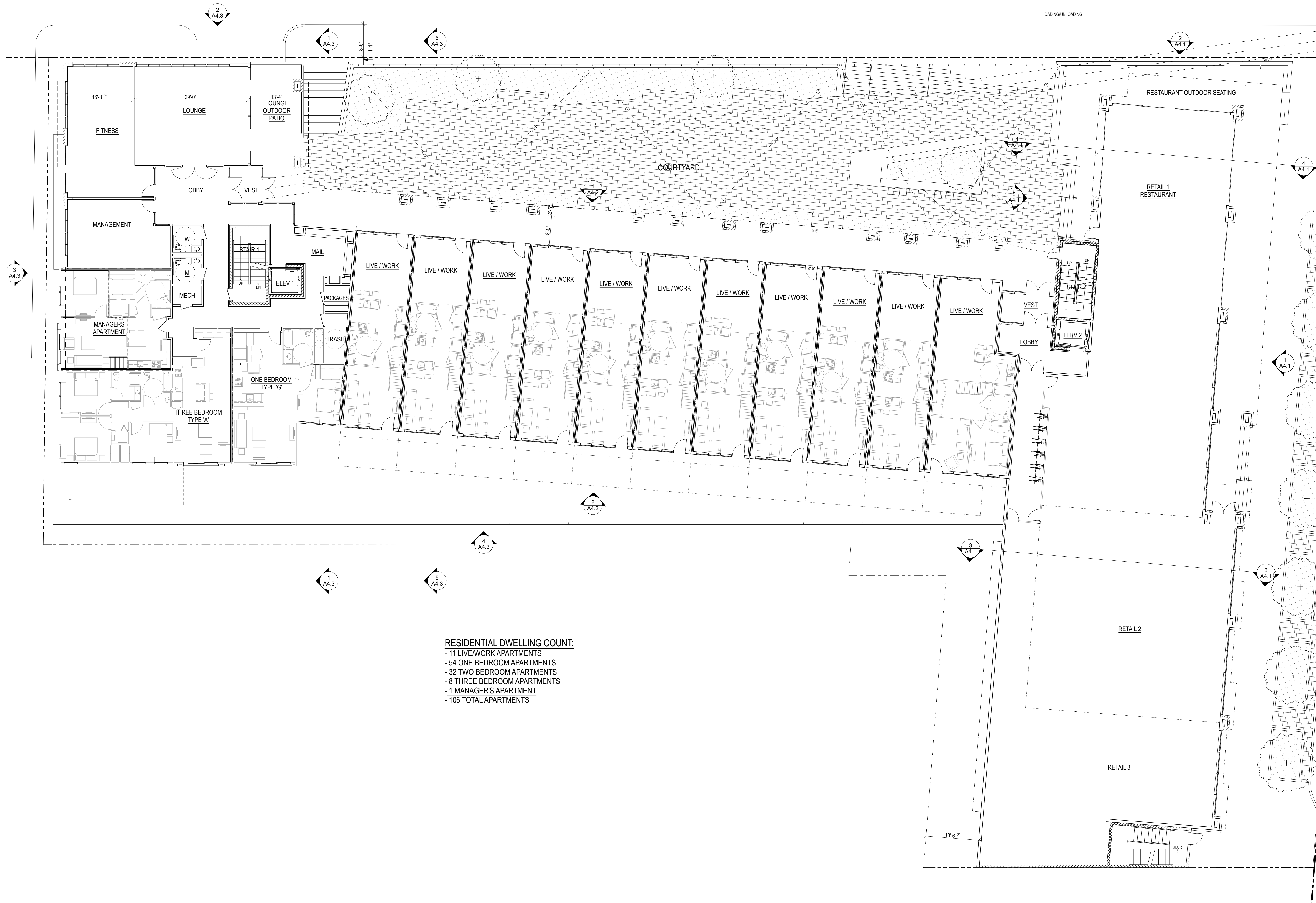
**M E R I D I A**  
**VILLAGE-COMMONS**  
**PROPOSED MIXED USE BUILDING**

BLOCK 2303, LOTS 7, 8, 9, 10 & 11  
SOUTH ORANGE VILLAGE, NJ. 07079 ESSEX COUNTY

| MARK  | DATE     | DESCRIPTION               |
|---|----------|---------------------------|
|   | 06/20/17 | PLANNING BOARD SUBMISSION |
|   |          |                           |
|   |          |                           |
|   |          |                           |
|   |          |                           |
|   |          |                           |
|   |          |                           |
| SCALE: AS NOTED                             |          |                           |
| DRAWN BY:                                   |          | FB, MD, EA                |
| CHK'D BY:                                   |          | MD, JH                    |
| COPYRIGHT © HALEY DONOVAN ARCHITECTURE 2016 |          |                           |

## A1.2

### FIRST FLOOR PLAN



**RESIDENTIAL DWELLING COUNT:**

- 11 LIVE/WORK APARTMENTS
- 54 ONE BEDROOM APARTMENTS
- 32 TWO BEDROOM APARTMENTS
- 8 THREE BEDROOM APARTMENTS
- **1 MANAGER'S APARTMENT**
- 106 TOTAL APARTMENTS

1  
A1.2

### FIRST FLOOR PLAN

SCALE: 3/32" = 1'-0"





106 kings highway east  
haddonfield nj 08033  
856.203.6061  
www.haleydonovan.com



consultant

**M E R I D I A**  
**VILLAGE-COMMONS**  
**PROPOSED MIXED USE BUILDING**

BLOCK 2303, LOTS 7, 8, 9, 10 & 11  
SOUTH ORANGE VILLAGE, NJ. 07079 ESSEX COUNTY

| MARK   | DATE     | DESCRIPTION                |
|--|----------|----------------------------|
|  | 06/20/17 | PLANNING BOARD SUBMISSIONS |
|  |          |                            |
|  |          |                            |
|  |          |                            |
|  |          |                            |
|  |          |                            |
|  |          |                            |
|  |          |                            |
| <b>SCALE:</b> AS NOTED                             |          |                            |
| <b>DRAWN BY:</b>                                   |          | FB, MD, EA                 |
| <b>CHKD BY:</b>                                    |          | MD, JH                     |
| <b>COPYRIGHT</b> © HALEY DONOVAN ARCHITECTURE 2016 |          |                            |

### A1.3

## SECOND FLOOR PLAN



1  
A1.3

## SECOND FLOOR PLAN

SCALE: 3/32" = 1'-0"





106 kings highway east  
haddonfield nj 08033  
856.203.6061  
www.haleydonovan.com



consultant

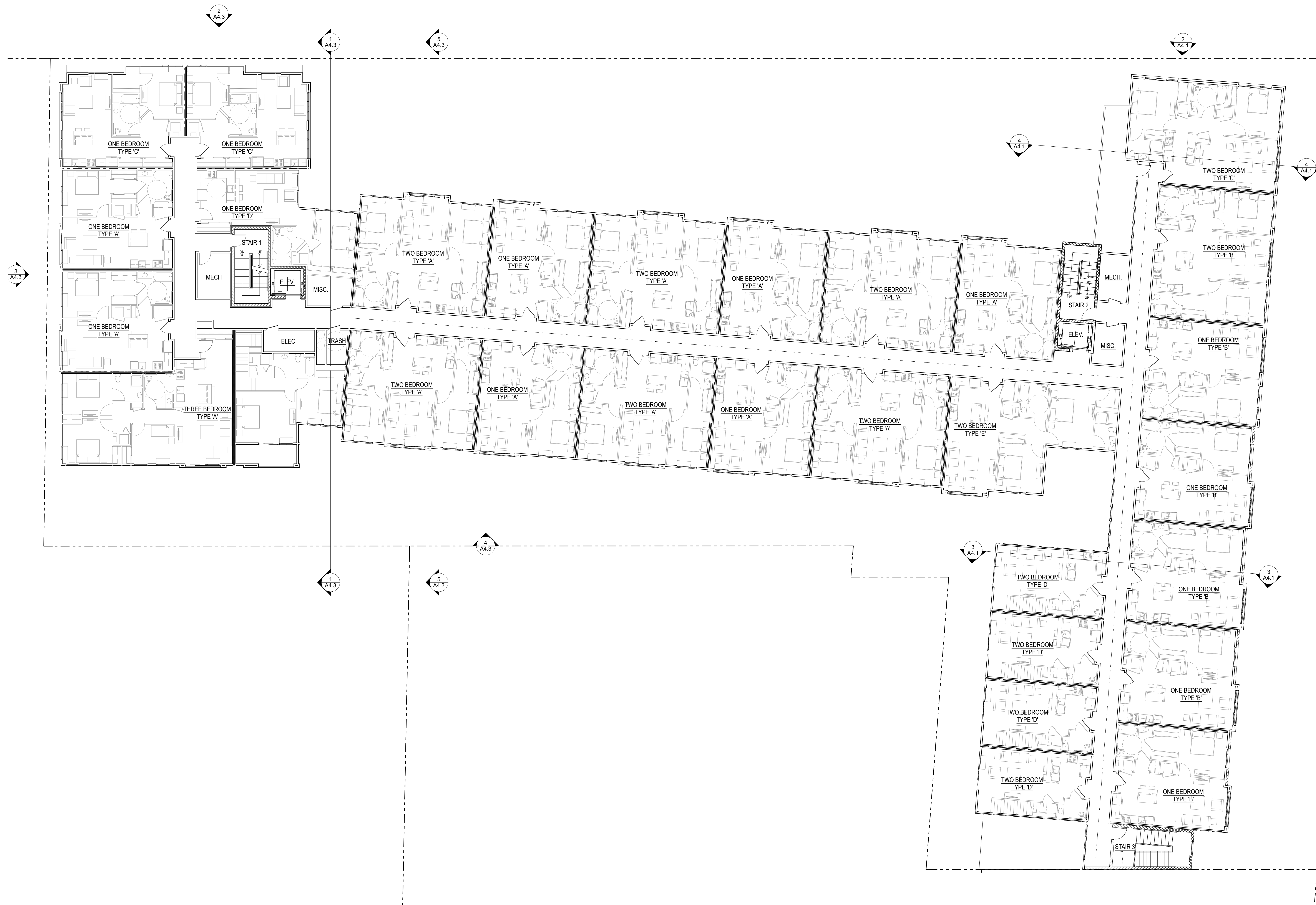
**M E R I D I A**  
VILLAGE-COMMONS  
PROPOSED MIXED USE BUILDING

BLOCK 2303, LOTS 7, 8, 9, 10 & 11  
SOUTH ORANGE VILLAGE, NJ. 07079 ESSEX COUNTY

| MARK            | DATE                              | DESCRIPTION               |
|-----------------|-----------------------------------|---------------------------|
|                 | 06/20/17                          | PLANNING BOARD SUBMISSION |
|                 |                                   |                           |
|                 |                                   |                           |
|                 |                                   |                           |
|                 |                                   |                           |
|                 |                                   |                           |
|                 |                                   |                           |
| SCALE: AS NOTED |                                   |                           |
| DRAWN BY:       |                                   | FB, MD, EA                |
| CHK'D BY:       |                                   | MD, JH                    |
| COPYRIGHT       | © HALEY DONOVAN ARCHITECTURE 2016 |                           |

## A1.4

THIRD FLOOR PLAN



1  
A1.4

### THIRD FLOOR PLAN

SCALE: 3/32" = 1'-0"





106 kings highway east  
haddonfield nj 08033  
856.203.6061  
www.haleydonovan.com



consultant

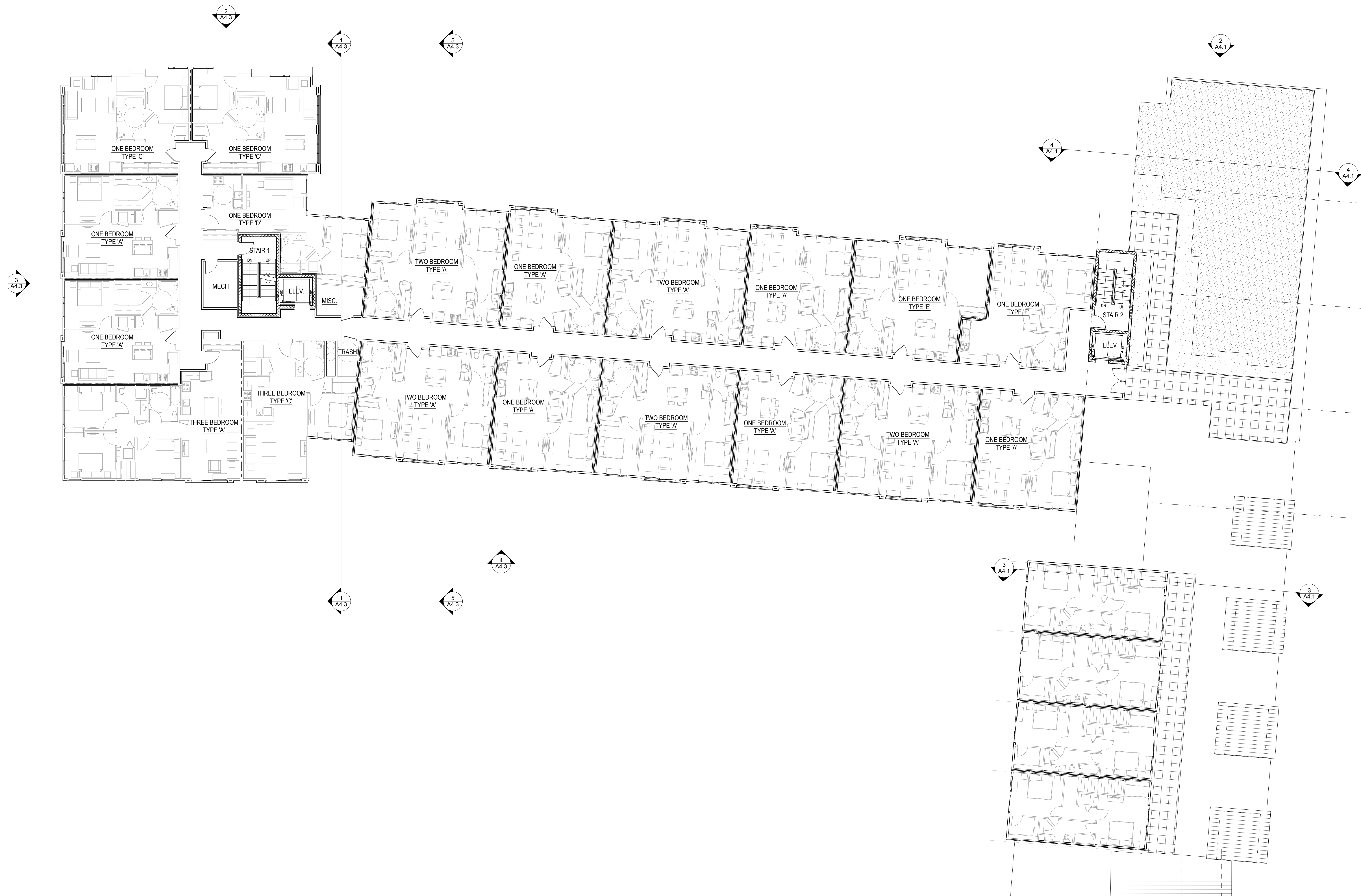
**M E R I D I A**  
**VILLAGE-COMMONS**  
**PROPOSED MIXED USE BUILDING**

BLOCK 2303, LOTS 7, 8, 9, 10 & 11  
SOUTH ORANGE VILLAGE, NJ. 07079 ESSEX COUNTY

[illegible]

## A1.5

FOURTH FLOOR PLAN



1  
A1.5

## FOURTH FLOOR PLAN

SCALE: 3/32" = 1'-0"







HALEY.DONOVAN  
architecture llc

106 kings highway east  
haddonfield nj 08033  
856.203.6061  
www.haleydonovan.com



professional seal

consultant

M E R I D I A

VILLAGE-COMMONS  
PROPOSED MIXED USE BUILDING

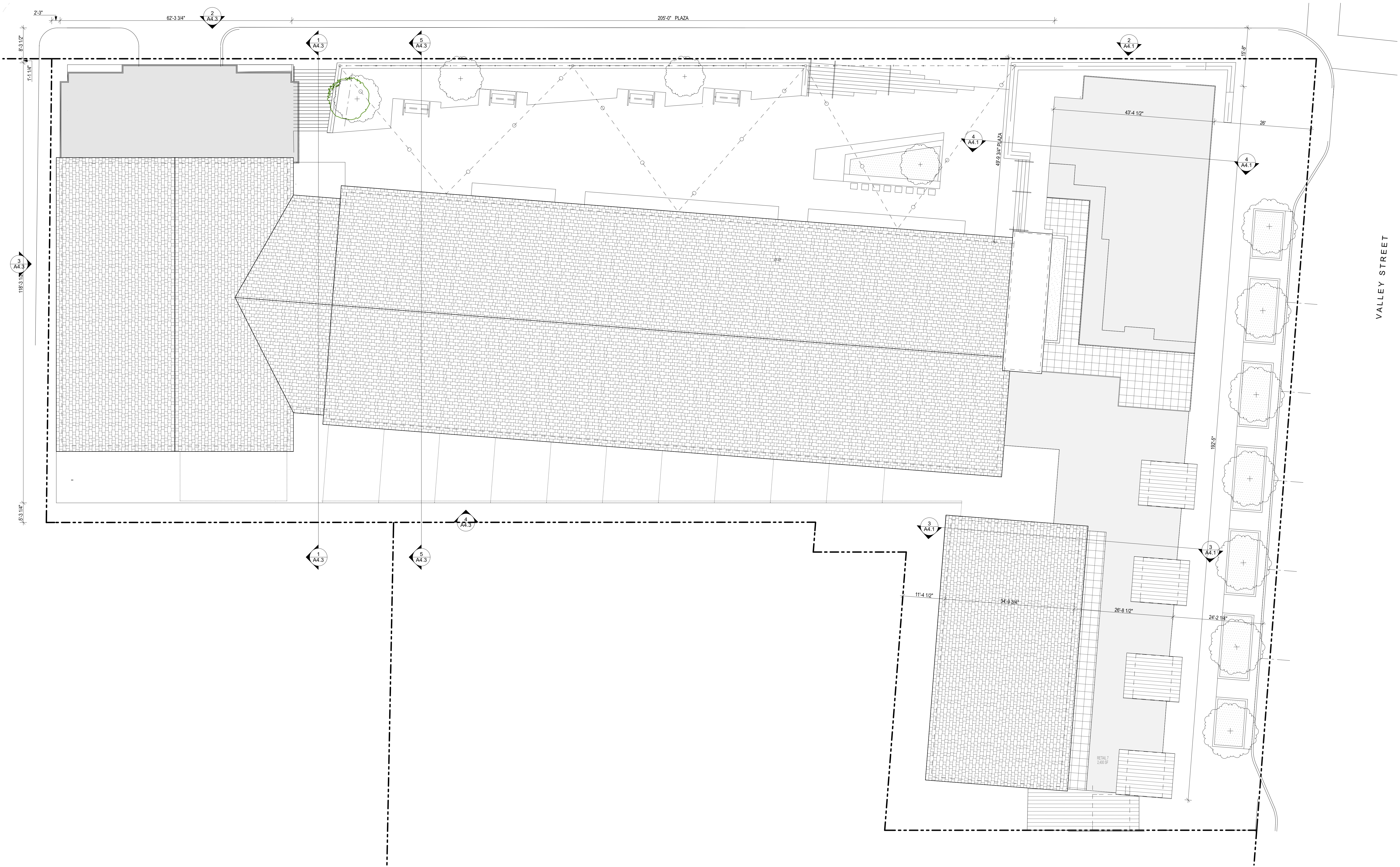
BLOCK 2303, LOTS 7, 8, 9, 10 & 11  
SOUTH ORANGE VILLAGE, NJ, 07079 ESSEX COUNTY

| MARK  | DATE     | DESCRIPTION               |
|---|----------|---------------------------|
|   | 06/20/17 | PLANNING BOARD SUBMISSION |
|   |          |                           |
|   |          |                           |
|   |          |                           |
|   |          |                           |
|   |          |                           |
|   |          |                           |
|   |          |                           |
|   |          |                           |
| SCALE: AS NOTED                             |          |                           |
| DRAWN BY:                                   |          | FB, MD, EA                |
| CHK'D BY:                                   |          | MD, JH                    |
| COPYRIGHT © HALEY DONOVAN ARCHITECTURE 2016 |          |                           |

A1.6

FIFTH FLOOR PLAN









106 kings highway east  
haddonfield nj 08033  
856.203.6061  
www.haleydonovan.com



consultant

**M E R I D I A**  
VILLAGE-COMMONS  
PROPOSED MIXED USE BUILDING

BLOCK 2303, LOTS 7, 8, 9, 10 & 11  
SOUTH ORANGE VILLAGE, NJ. 07079 ESSEX COUNTY

[illegible]

### A4.1

ELEVATIONS - VALLEY ST.  
WING







106 kings highway east  
haddonfield nj 08033  
856.203.6061  
www.haleydonovan.com



consultant

**M E R I D I A**  
VILLAGE-COMMONS  
PROPOSED MIXED USE BUILDING

BLOCK 2303, LOTS 7, 8, 9, 10 & 11  
SOUTH ORANGE VILLAGE, NJ. 07079 ESSEX COUNTY

| MARK  | DATE     | DESCRIPTION               |
|---|----------|---------------------------|
|   | 06/20/17 | PLANNING BOARD SUBMISSION |
|   |          |                           |
|   |          |                           |
|   |          |                           |
|   |          |                           |
|   |          |                           |
|   |          |                           |
|   |          |                           |
|   |          |                           |
| SCALE: AS NOTED                             |          |                           |
| DRAWN BY:                                   |          | FB, MD, EA                |
| CHKD BY:                                    |          | MD, JH                    |
| COPYRIGHT © HALEY DONOVAN ARCHITECTURE 2016 |          |                           |

## A4.2

ELEVATIONS - FOURTH  
STREET WING



2 4TH ST WING - ELEVATION - REAR  
A4.2 SCALE: 3/32" = 1'-0"



1  
A4.2 4TH ST WING - ELEVATION - COURTYARD  
SCALE: 3/32" = 1'-0"

1  
A4.2

4TH ST W

SCALE: 3/32" = 1'-0"





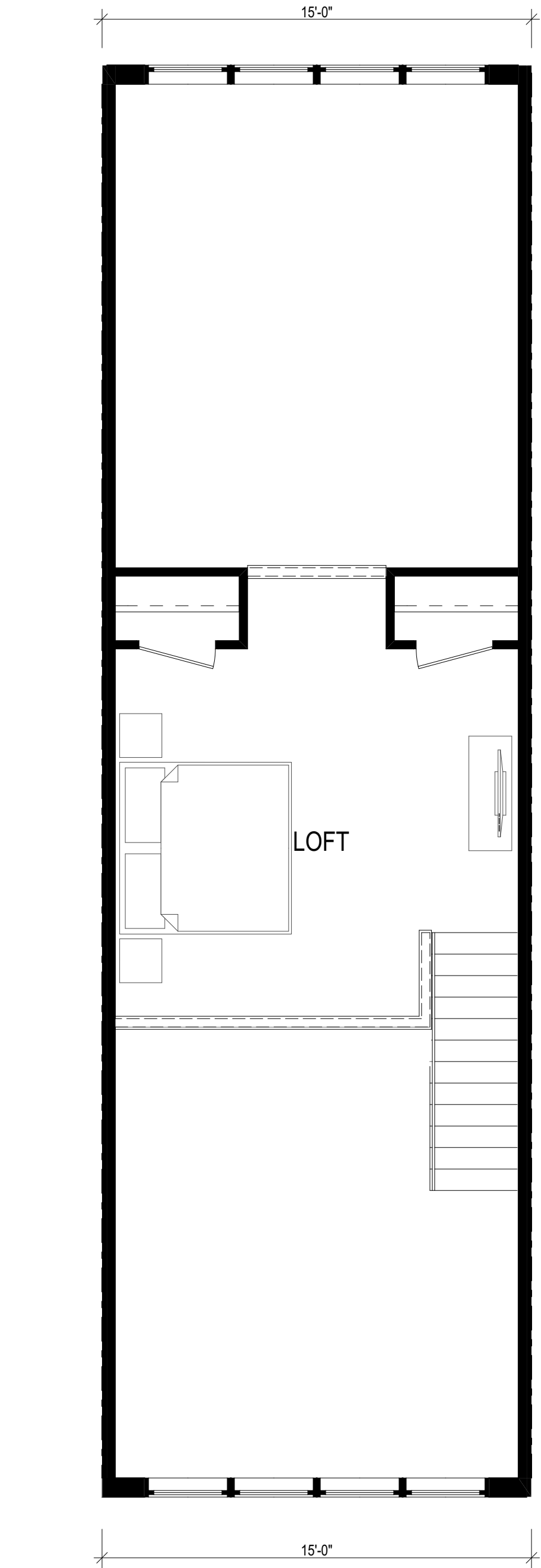
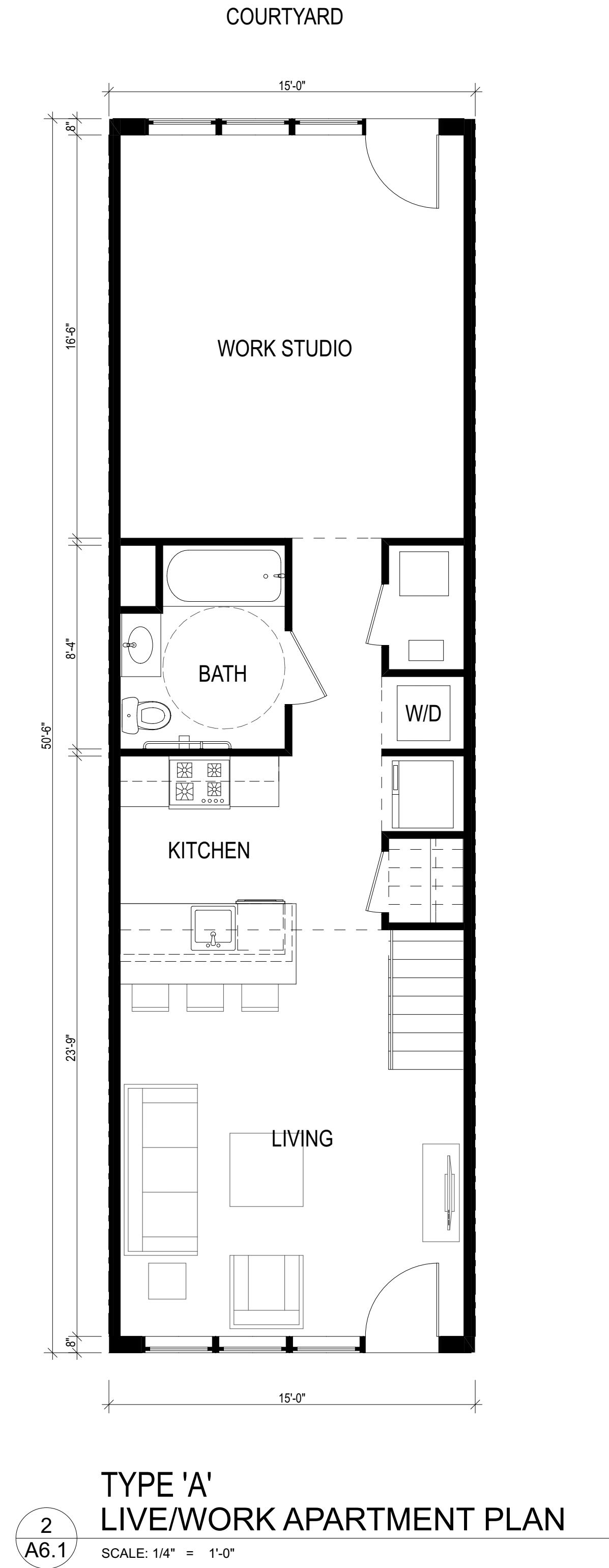




consultant

M E R I D I A  
VILLAGE-COMMONS  
PROPOSED MIXED USE BUILDING  
BLOCK 2303, LOTS 7, 8, 9, 10 & 11  
SOUTH ORANGE VILLAGE, NJ, 07079 ESSEX COUNTY

| MARK            | DATE     | DESCRIPTION                       |
|-----------------|----------|-----------------------------------|
|                 | 06/20/17 | PLANNING BOARD SUBMISSION         |
|                 |          |                                   |
|                 |          |                                   |
|                 |          |                                   |
|                 |          |                                   |
|                 |          |                                   |
|                 |          |                                   |
|                 |          |                                   |
|                 |          |                                   |
| SCALE: AS NOTED |          | FB, MD, EA                        |
| DRAWN BY:       |          | MD, JH                            |
| CHK'D BY:       |          | MD, JH                            |
| COPYRIGHT       |          | © HALEY DONOVAN ARCHITECTURE 2016 |

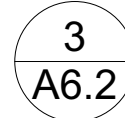


3  
A6.1

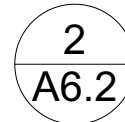
LIVE/WORK LOFT PLAN

SCALE: 1/4" = 1'-0"

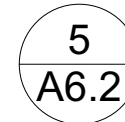




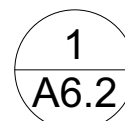
SCALE: 1/4" = 1'-0"



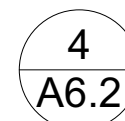
SCALE: 1/4" = 1'-0"



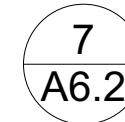
SCALE: 1/4" = 1'-0"



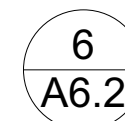
SCALE: 1/4" = 1'-0"



SCALE: 1/4" = 1'-0"



SCALE: 1/4" = 1'-0"



SCALE: 1/4" = 1'-0"







106 kings highway east  
haddonfield nj 08033  
856.203.6061  
www.haleydonovan.com



consultant

**M E R I D I A**  
VILLAGE-COMMONS  
PROPOSED MIXED USE BUILDING

BLOCK 2303, LOTS 7, 8, 9, 10 & 11  
SOUTH ORANGE VILLAGE, NJ. 07079 ESSEX COUNTY

[illegible]

### A6.3

ONE BEDROOM UNIT PLANS



SCALE: 1/4" = 1'-0"

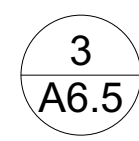


SCALE: 1/4" = 1'-0"

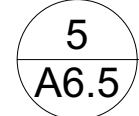








SCALE: 1/4" = 1'-0"



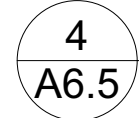
SCALE: 1/4" = 1'-0"



SCALE: 1/4" = 1'-0"



SCALE: 1/4" = 1'-0"



SCALE: 1/4" = 1'-0"



SCALE: 1/4" = 1'-0"

