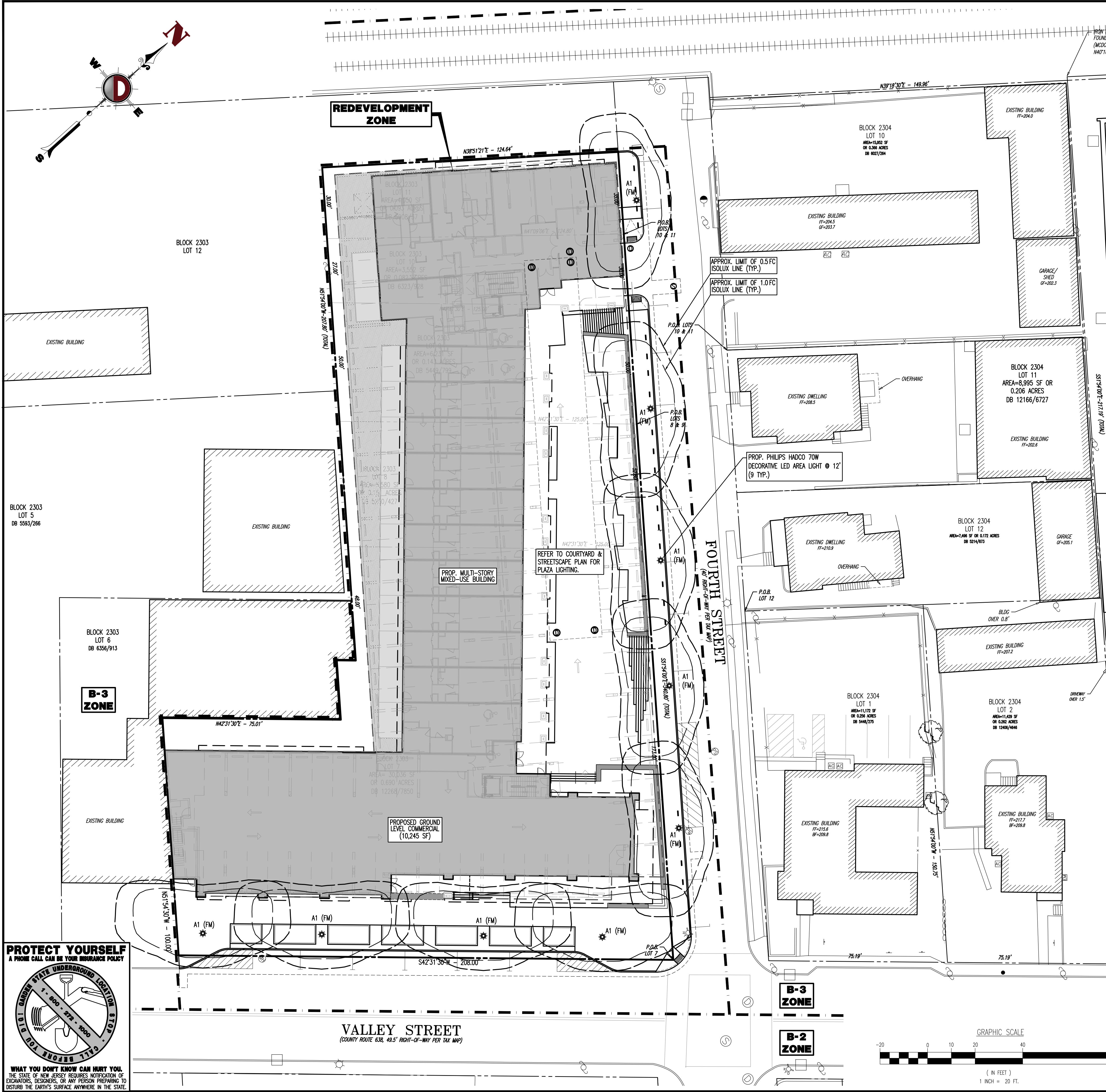


PROTECT YOURSELF
A PHONE CALL CAN BE YOUR INSURANCE POLICY

WHAT YOU DON'T KNOW CAN HURT YOU.
THE STATE OF NEW JERSEY REQUIRES NOTIFICATION OF EXCAVATORS, DESIGNERS, OR ANY PERSON PREPARING TO DISTURB THE EARTH'S SURFACE ANYWHERE IN THE STATE.



LIGHTING NOTES

- THIS LIGHTING PLAN ILLUSTRATES ILLUMINATION LEVELS CALCULATED FROM LABORATORY DATA TAKEN UNDER CONTROLLED CONDITIONS IN ACCORDANCE WITH ILLUMINATING ENGINEERING SOCIETY OF NORTH AMERICA (IESNA) APPROVED METHODS. ACTUAL SITE ILLUMINATION LEVELS AND PERFORMANCE OF LUMINAIRES MAY VARY DUE TO VARIATIONS IN WEATHER, ELECTRICAL VOLTAGE, TOLERANCE IN LAMPS, AND OTHER RELATED VARIABLE FIELD CONDITIONS.
- ALL EXISTING CONDITIONS LIGHTING LEVELS ARE REPRESENTATIVE OF AN APPROXIMATION UTILIZING LABORATORY DATA FOR SIMILAR FIXTURES AND/OR ACTUAL FIELD MEASUREMENTS TAKEN WITH A LIGHT METER. DUE TO FACTORS SUCH AS FIXTURE MAINTENANCE, EQUIPMENT TOLERANCES, WEATHER CONDITIONS, ETC., ACTUAL LIGHTING LEVELS MAY DIFFER AND THE LIGHTING LEVELS DEPICTED ON THIS PLAN SHOULD BE CONSIDERED AS APPROXIMATE.
- CONDUITS SHALL BE INSTALLED A MINIMUM OF 2 FEET BEHIND GUIDELINE POSTS.
- ALL WIRING METHODS AND EQUIPMENT CONSTRUCTION SHALL CONFORM TO THE CURRENT NATIONAL ELECTRICAL CODE.
- REFER TO ARCHITECTURAL PLANS FOR BUILDING MOUNTED LIGHTING DESIGN.
- REFER TO COURTYARD & STREETSCAPE PLANS FOR PUBLIC PLAZA AREA LIGHTING DESIGN.
- ADEQUATE ILLUMINATION ACROSS ALL WALKWAYS AND SEATING AREAS SHALL BE PROVIDED IN THE PUBLIC COURTYARD IN ACCORDANCE WITH THE REDEVELOPMENT PLAN.

Philips LEDgine

Philips LEDgine Specifications:

- 48 or 64, 4000K (Warm) Philips Lumileds Luxeon
- 1 LED, Super PS Color Rendering Index (CRI) >80,000 hours of operation (at 27°C ambient temperature & 100% power factor), aluminum core pcb, sealed glass lens, PSE rated, evenly light distribution.
- Integrated Philips Advance Stadium LED driver, class 1, PSE rated, 500W, available 120V/277VAC, 50-60 Hz, fully compliant, 200V/200A rated maximum in-cable surge capability.
- Manufactured to ISO 9001:2008 standards.
- Fixture is driven to not third party (ETL/UL) listed.

Decorative Area Light Detail 'A'

LUMINAIRE SCHEDULE

SYMBOL	QTY	LABEL	ARRANGEMENT	MOUNTING HEIGHT	WATTS	LLF	DESCRIPTION	FILENAME
	9	A1	SINGLE	12'	70	0.9	PHILIPS HADCO VILLAGER LED MODEL NO: VK09264-3HNA3-R-14 (LED) IES	VK09264-3HNA3-R-14 (LED) IES

DECORATIVE AREA LIGHT DETAIL 'A'

LUMINAIRE SCHEDULE

SYMBOL	QTY	LABEL	ARRANGEMENT	MOUNTING HEIGHT	WATTS	LLF	DESCRIPTION	FILENAME
	9	A1	SINGLE	12'	70	0.9	PHILIPS HADCO VILLAGER LED MODEL NO: VK09264-3HNA3-R-14 (LED) IES	VK09264-3HNA3-R-14 (LED) IES

DYNAMIC ENGINEERING
LAND DEVELOPMENT CONSULTING • PERMITTING • GEOTECHNICAL • ENVIRONMENTAL • SURVEY • PLANNING & ZONING

1904 Main Street, Suite 110, Chester, NJ 07930
790 Newtown Turnpike, Suite 425, Newtown, PA 18940
1301 Central Expressway South, Suite 510, Allen, TX 75013

THIS PLAN SET IS FOR PERMITTING PURPOSES ONLY AND MAY NOT BE USED FOR CONSTRUCTION

LIGHTING PLAN

PROJECT: CAPODAGLI PROPERTY COMPANY, LLC / MERIDIA, LLC
MERIDIA VILLAGE COMMONS - PROPOSED MIXED-USE BUILDING
BLOCK 2303, LOTS 7-11
4TH STREET & VALLEY STREET (C.R. 638)
TOWNSHIP OF SOUTH ORANGE VILLAGE, ESSEX COUNTY, NJ

JOSEPH C. SPARONE
PROFESSIONAL ENGINEER
NEW JERSEY LICENSE NO. 47204
PENNSYLVANIA LICENSE NO. 78935
COLORADO LICENSE NO. 18448
VIRGINIA LICENSE NO. 61627

BRETT W. SKAPINETZ
PROFESSIONAL ENGINEER
NEW JERSEY LICENSE NO. 41895
PENNSYLVANIA LICENSE NO. 77727
NEW YORK LICENSE NO. 087962
CONNECTICUT LICENSE NO. 0027591

DATE: 06/19/2017
SCALE: (H) 1"=20' (V)
SHEET NO: 7
DEC Client Code: 1084