

1 SITE PLAN
SP-1 SCALE: 1"=30'

NOTE
INDICATES ADDED SINCE LAST
SUBMISSION 8-7-2010

SIGNATURES REQUIRED

CHAIRMAN	DATE
SECRETARY	DATE
TOWNSHIP ENGINEER	DATE

2 PROPOSED SIGN
SP-1 SCALE: 1/2"=1'-0"

STEM
Innovation Academy
of the Oranges
-EST 2017-

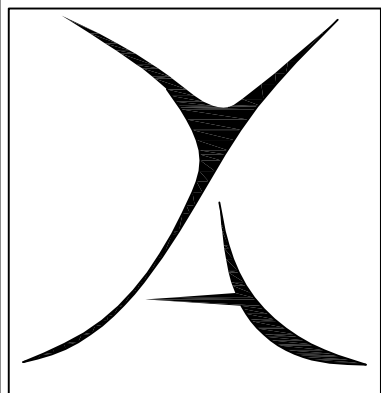
445 Scotland Road

445 Scotland Road

445 Scotland Road

445 Scotland Road

445 Scotland Road



ARCHITECTURE
PLANNING
ENGINEERING
INTERIORS
MANAGEMENT

18 Washington Street
P.O. Box 1699
Toms River, NJ 08794
Tel: 732-240-3433
Fax: 732-240-3463
E-mail: info@yezziassociates.com
Website: www.yezziassociates.com

Massimo Franco Yezzi, Jr.
Architect No. C 714716 -NJ
Planner No. 2360 -NJ
Architect No. 010302 -NY
Architect No. 0127005 -PA
Architect No. 71460 -CT
Architect No. 0475 -NC
Architect No. 00705 -SC
Architect No. 03304 -FL
Architect No. 0755 -NV
Architect No. 0187-005 -WIS
Architect No. 30014 -NCARB
Architect No. 3020377 -AIA

Daniel M. Serratto
Architect No. 21001007000 -NJ
Architect No. 73072 -NCARB



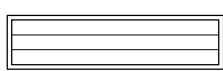

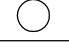
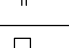
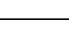
Seal
Signature Date

PROPOSED ALTERATIONS TO:
S.T.E.M. ACADEMY
ORANGE SCHOOL DISTRICT
445 SCOTLAND RD.
SOUTH ORANGE
BLOCK 416 LOT: 3, 4, 5 AND 9

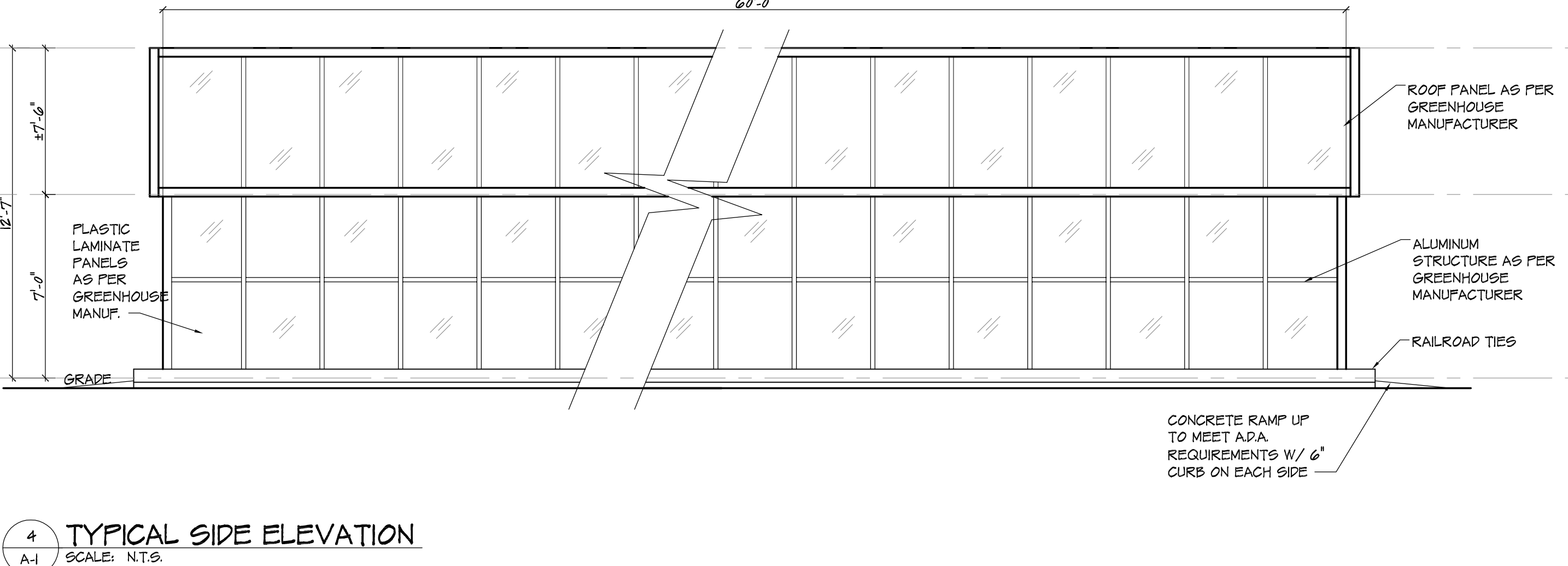
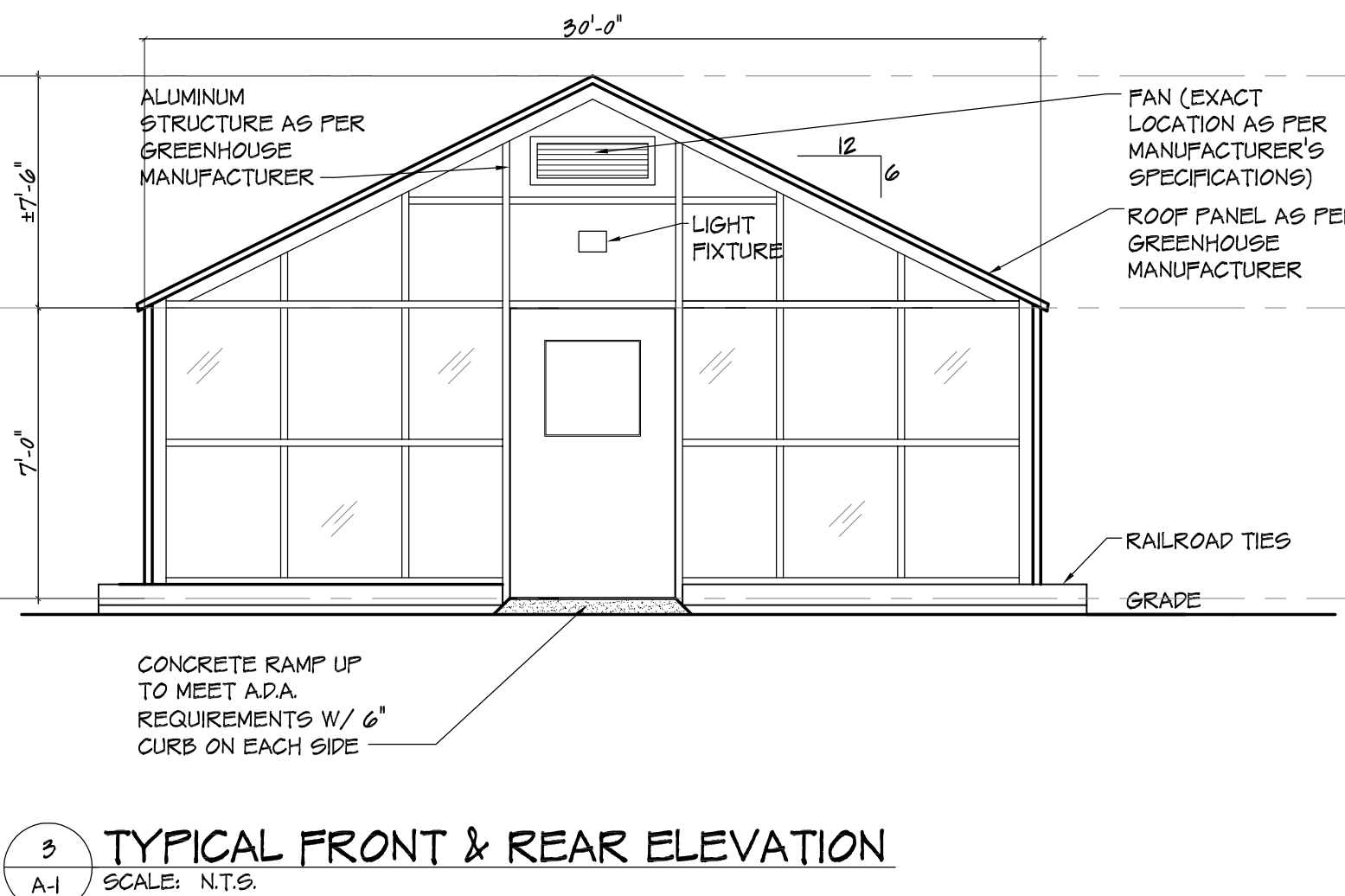
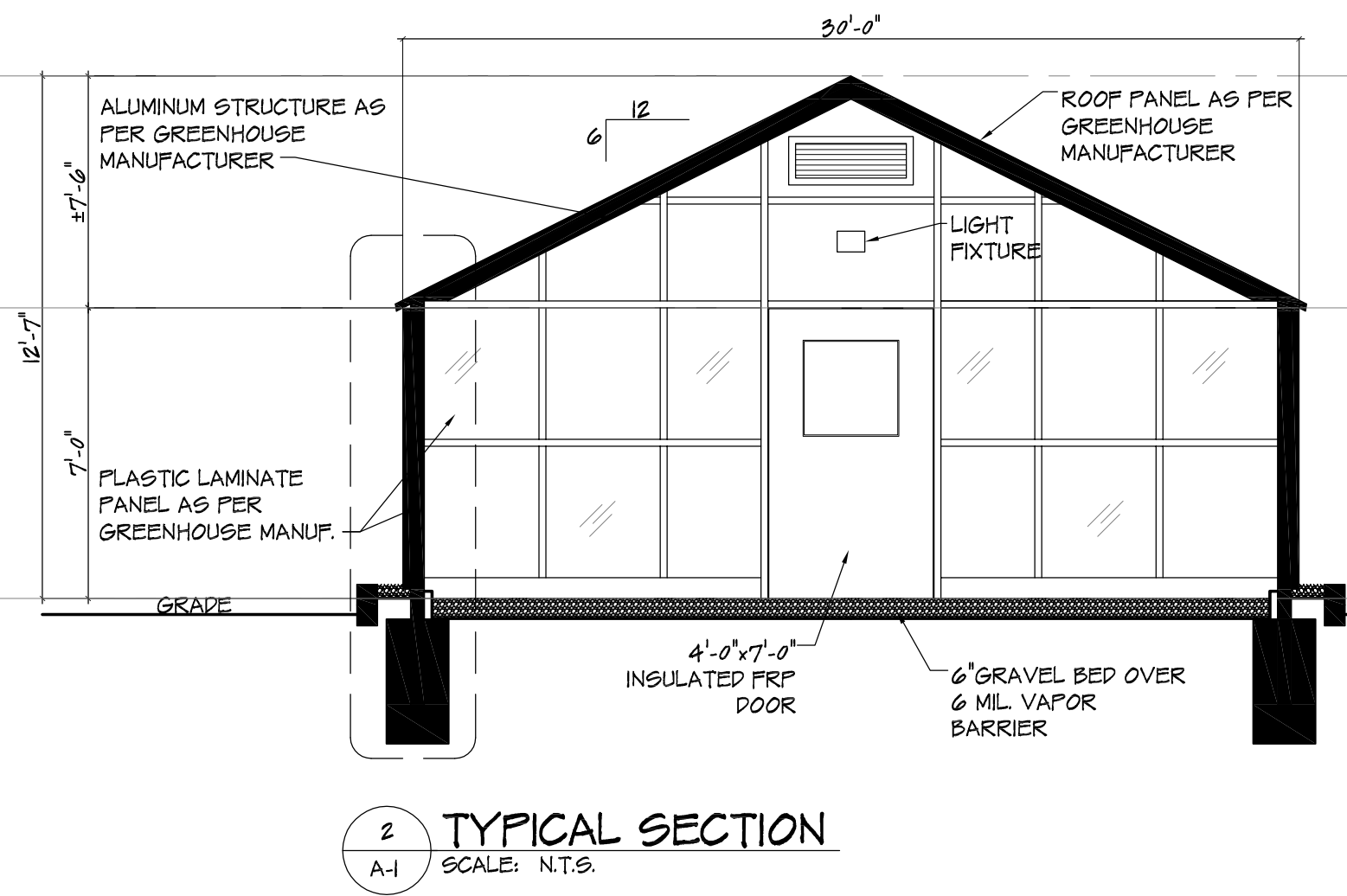
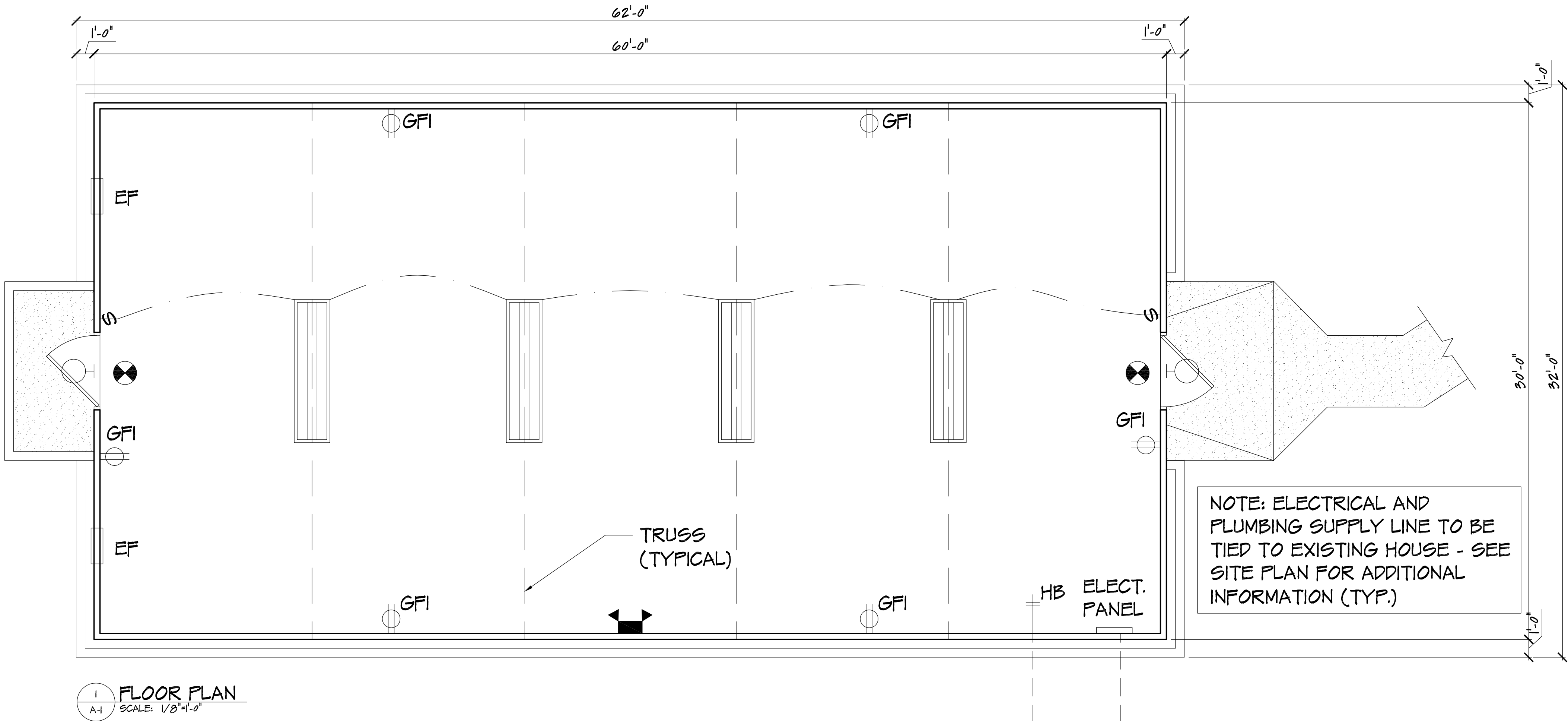
Project	Project Bld Date
APRIL 10, 2010	
Revisions	By Date
1 MPY	6-9-2010
2 FJR	8-7-2010
3 CJP	4-10-2010

Sheet Title	SITE PLAN
Drawn By	CP
Chk'd By	MPY
Sheet No.	1 OF 2

SP-1
Project No. YC10123

LEGEND	
	EXIT SIGN- A/C WIRED BATTERY BACK-UP UNIT WITH DIRECTIONAL ARROW KNOCK-OUTS.
	4 PLUG GROUND FAULT INTERRUPTER OUTLET
	1'-0" x 8'-0" CL/G MOUNTED (3 LAMP) LIGHT FIXTURE (LIGHTOLIER - STW SERIES) OR ARCHITECT APPROVED EQUAL
	EMERGENCY LIGHT- A/C WIRED BATTERY BACK-UP UNIT
	EXTERIOR WALL MOUNTED LIGHT FIXTURE AS SELECTED BY OWNER ON PHOTO CELL
	NEW HOSE BIB W/ 1 1/2" PVC WATER SUPPLY TIED INTO EXISTING HOUSE (TYP.)
	EXHAUST FAN - THROUGH THE WALL (TYP.)

ELECTRICAL CONTENTS	
GFI OUTLETS	6
EXIT LIGHTS	2
EMERGENCY LIGHT	1
1x8' LIGHT FIXTURE	4
EXTERIOR LIGHTS	2
EXHAUST FAN	2





YEZZI ASSOCIATES

ARCHITECTURE
PLANNING
ENGINEERING
INTERIORS
MANAGEMENT

18 Washington Street
P.O. Box 1699
Toms River, NJ 08794
Tel: 732-240-3433
Fax: 732-240-3465
E-mail: info@yezziassociates.com
Website: www.yezziassociates.com

Masimo Franco Yezzi, Jr.
Architect No. C 74716 -NJ
Planner No. 2368 -NJ
Architect No. 019302 -NY
Architect No. 0127905 -PA
Architect No. 7460 -CT
Architect No. 8473 -NC
Architect No. 8078 -SC
Architect No. 83304 -FL
Architect No. 8755 -NV
Architect No. 9787-005 -WISC
Architect No. 30204 -NCARB
Architect No. 3026377 -AIA

Daniel M. Bernotti
Architect No. 21830807000 -NJ
Architect No. 73072 -NCARB

Project
Suggested Alterations To:
S.T.E.M. ACADEMY
ORANGE SCHOOL DISTRICT
BLOCK 416 LOT: 3, 4, 5 AND 9
443 SCOTLAND RD.
NEW JERSEY
SOUTH ORANGE

Project Start Date
APRIL 18, 2010

Revisions
By Date
1 MPY 6-9-2010
2 FJR 8-7-2010
3 CJP 4-18-2010

Sheet Title
GREENHOUSE PLAN AND ELEVATIONS

Drawn By
CP 2

Chk'd By
MPY 0"

Sheet No.
A-1

Project No.
YCI0123

OWNERSHIP OF DOCUMENTS: The documents, ideas and designs incorporated herein are instruments of professional service and are the property of Yezzi Associates and are not to be used, copied or reproduced in whole or in part without approval of Yezzi Associates. These documents have been prepared with the client prior to being signed and sealed by Yezzi Associates to ensure conformance with state scope of work.

Do Not Scale Drawings - Field check all dimensions prior to start of construction.